

WAAS CH 63102 W18A	APP CRS 182°	Rwy Idg TDZE Apt Elev	6498 3062 3062
--	------------------------	-----------------------------	---

RNAV (GPS) Z RWY 18

APPLE VALLEY (APV)

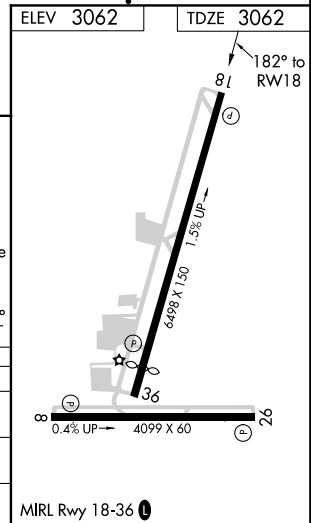
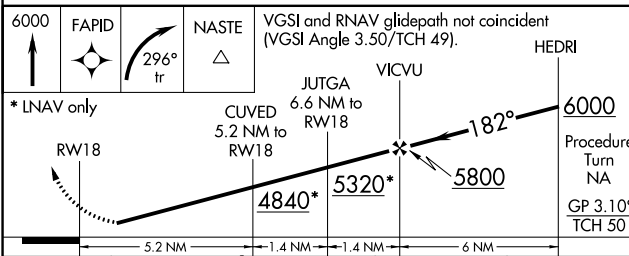
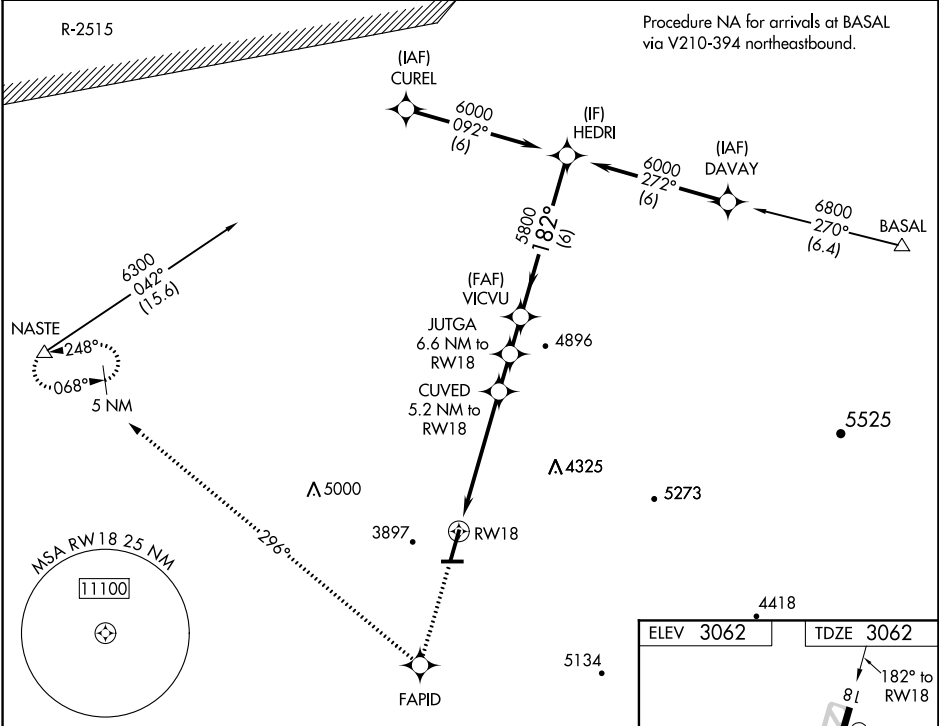
NA Circling to Rwy 8 and 26 NA. DME/DME RNP-0.3 NA.
NA Helicopter visibility reduction below 1 SM NA.
 Use Southern California Logistics altimeter setting; if not received, procedure NA.

MISSED APPROACH: Climb to 6000 direct FAPID and right turn via 296° track to NASTE and hold.

SOUTHERN CALIFORNIA LOGISTICS
 AWOS-3
135.475

JOSHUA APP CON
124.55 363.0

AUNICOM ★
122.8 (CTAF) 0



CATEGORY	A	B	C	D
LPV DA	3439-1¼ 377 (400-1¼)			
LNAV MDA	4600-1¼ 1538 (1600-1¼)	4600-1½ 1538 (1600-1½)	4600-3	1538 (1600-3)
CIRCLING	4600-1¼ 1538 (1600-1¼)	4600-1½ 1538 (1600-1½)	4600-3 1538 (1600-3)	4660-3 1598 (1600-3)

SW-3, 10 OCT 2019 to 07 NOV 2019

SW-3, 10 OCT 2019 to 07 NOV 2019