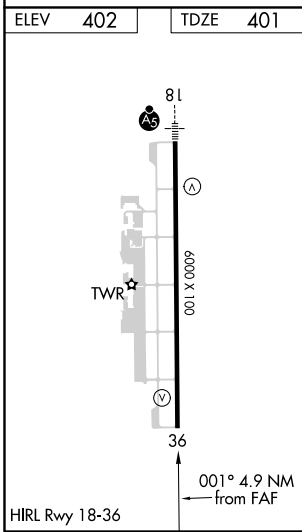
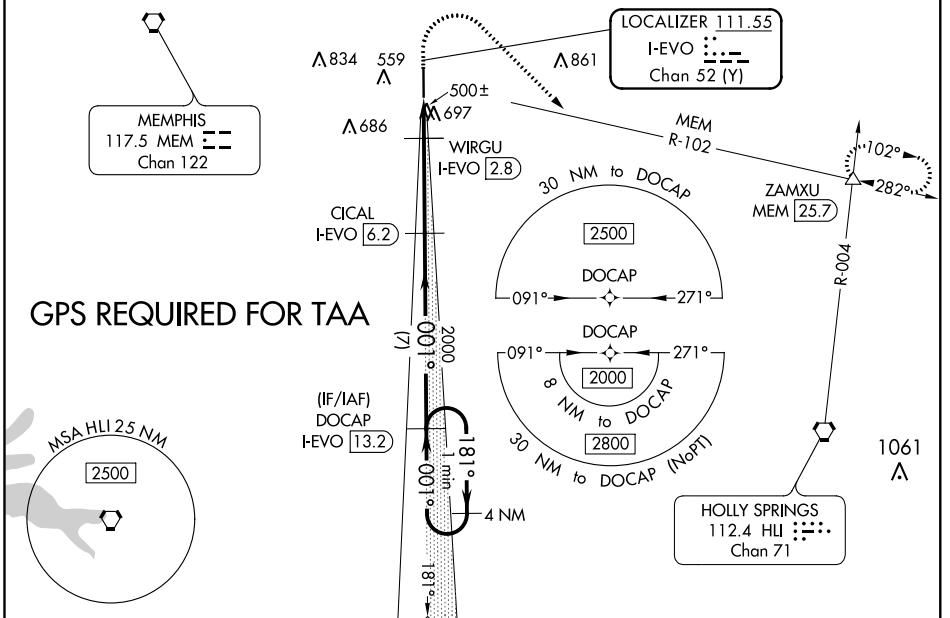


LOC/DME	I-EVO	APP CRS	Rwy Idg	<b>6000</b>
<b>111.55</b>		<b>001°</b>	TDZE	<b>401</b>
Chan	<b>52 (Y)</b>		Apt Elev	<b>402</b>

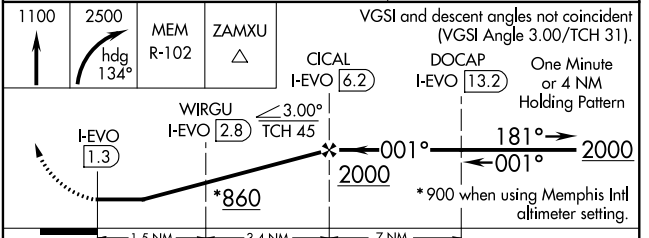
# LOC RWY 36

OLIVE BRANCH (OLV)

<p><b>▽</b> When local altimeter setting not received, use Memphis Intl altimeter setting and increase all MDA 40 feet; increase S-LOC 36 Cats C and D visibility 1/8 mile and Circling Cats C and D visibility 1/4 mile. Rwy 36 helicopter visibility reduction below 3/4 SM NA. DME required.</p>		<p>MISSED APPROACH: Climb to 1100 then climbing right turn to 2500 on heading 134° and MEM VORTAC R-102 to ZAMXU/MEM 25.7 DME and hold.</p>				
ATIS	MEMPHIS APP CON	OLIVE BRANCH TOWER ★	GND CON	CLNC DEL	MEMPHIS CLNC DEL	UNICOM
<b>119.925</b>	<b>125.8 338.3</b>	<b>125.275 (CTAF) 0</b>	<b>121.2</b>	<b>121.2</b>	<b>121.3</b> (When twr closed)	<b>122.95</b>



ALTERNATE MISSED APCH FIX	HOLLY SPRINGS
	HLI 112.4 Chan 71



CATEGORY	A	B	C	D
S-36	760-1 359 (400-1)			
<b>C</b> CIRCLING	1060-1 658 (700-1)	1060-1 <sup>3/4</sup> 658 (700-1 <sup>3/4</sup> )	1200-2 <sup>1/2</sup> 798 (800-2 <sup>1/2</sup> )	

SC-4, 10 OCT 2019 to 07 NOV 2019

SC-4, 10 OCT 2019 to 07 NOV 2019