

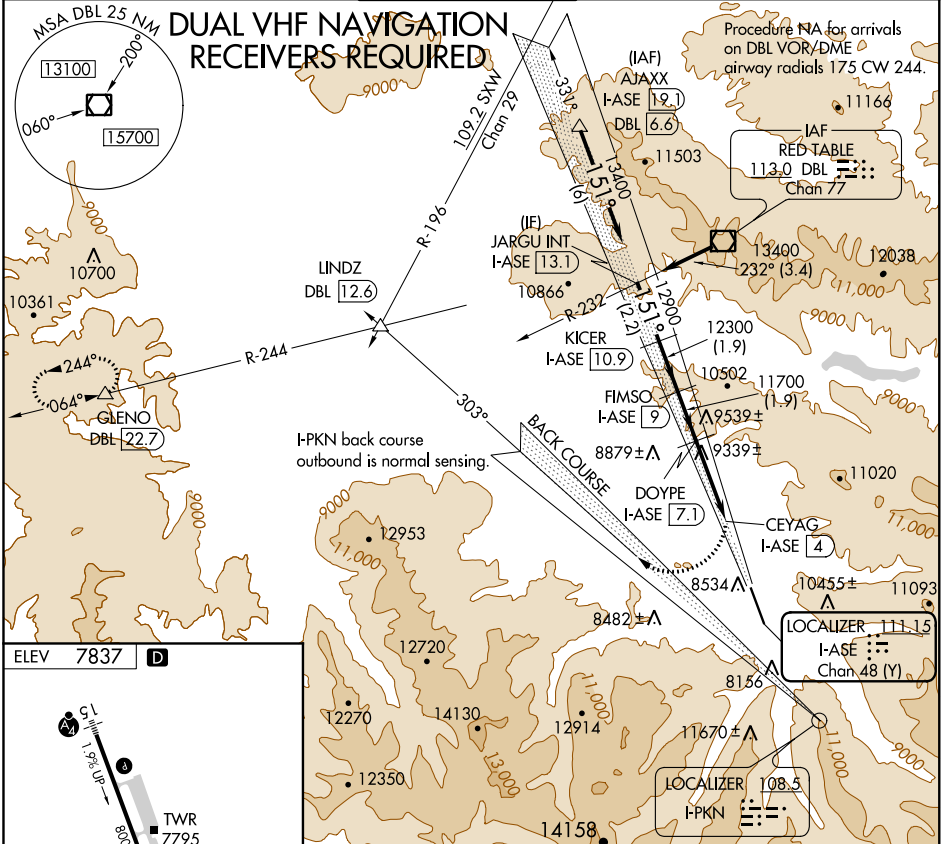
LOC/DME I-ASE <b>111.15</b> Chan <b>48 (Y)</b>	APP CRS <b>151°</b>	Rwy Idg TDZE Apt Elev <b>N/A</b> <b>N/A</b> <b>7837</b>
--	------------------------	--

# LOC/DME-E

ASPEN-PITKIN COUNTY/SARDY FIELD (ASE)

**NA** Procedure NA at night.  
**MISSED APPROACH:** Climbing right turn to 14000 on heading 300° and on I-PKN localizer NW course (303°) to LINDZ INT/DBL 12.6 DME and on DBL VOR/DME R-244 to GLENO INT/DBL 22.7 DME and hold.

ATIS <b>120.4</b>	ASPEN APP CON * <b>123.8 288.3</b>	ASPEN TOWER * <b>118.85 (CTAF) 0 288.3</b>	GND CON <b>121.9</b>	CLNC DEL <b>123.75</b>	UNICOM <b>122.95</b>
----------------------	---------------------------------------	---	-------------------------	---------------------------	-------------------------



SW-1, 10 OCT 2019 to 07 NOV 2019

SW-1, 10 OCT 2019 to 07 NOV 2019

VGSi and descent angles not coincident (VGSi Angle 3.50/TCH 55). JARGU INT I-ASE [13.1] KICER I-ASE [10.9] FIMSO I-ASE [9] DOYPE I-ASE [7.1] CEYAG I-ASE [4]	14000	I-PKN NW crs (303°)	LINDZ	DBL R-244	GLENO
	hdg 300°		△	△	△
CATEGORY A B C D	9840-3 2003 (2100-3)	10020-3 2183 (2200-3)	10220-3 2383 (2400-3)	NA	NA