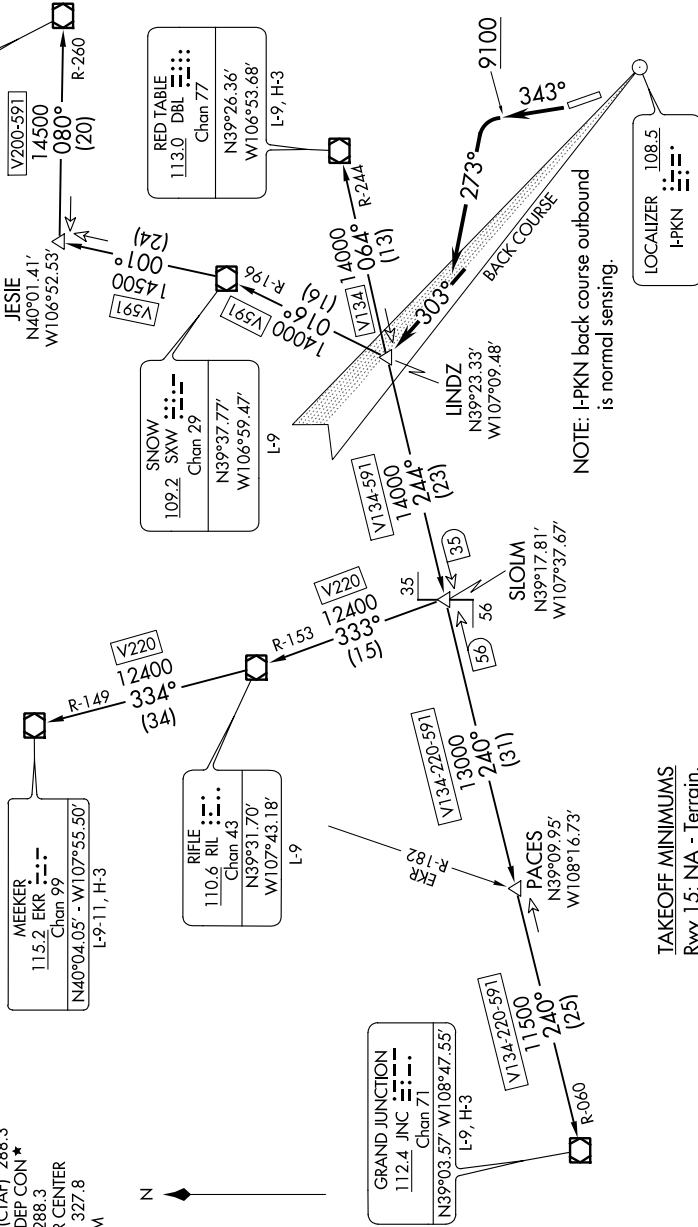
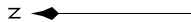


LINDZ NINE DEPARTURE

6102 \NON.Z\ 10 OCT 2019 10:07 AM

**TOP ALTITUDE:
16000**

- ATIS 120.4
- CINC DEL 123.75
- GND CON 121.9
- ASPEN TOWER* 118.85 (CTAF) 288.3
- ASPEN DEP CON* 123.8 288.3
- DENVER CENTER 125.35 327.8
- UNICOM 122.95



TAKEOFF MINIMUMS
 Rwy 15: NA - Terrain.
 Rwy 33: 400-1 with minimum climb of 465' per NM to 10000.

NOTE: Chart not to scale.

(NARRATIVE ON FOLLOWING PAGE)

SW-1, 10 OCT 2019 to 07 NOV 2019

LINDZ NINE DEPARTURE