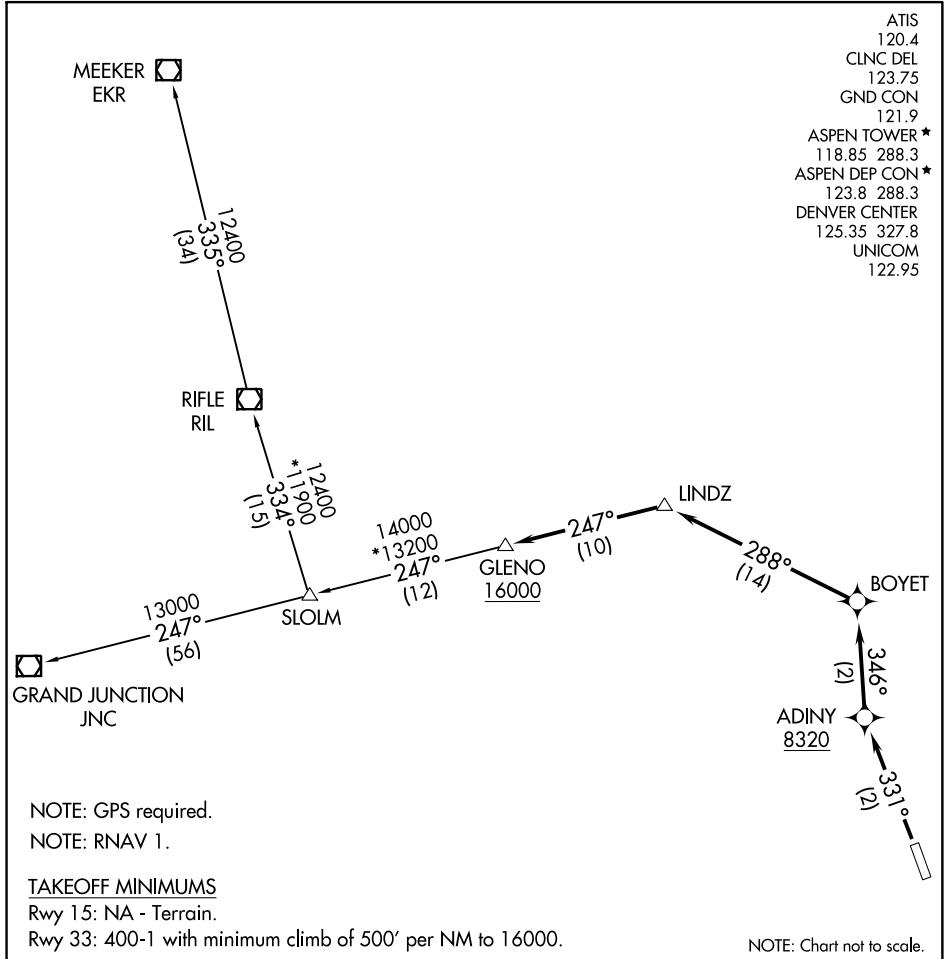


- ATIS 120.4
- CLNC DEL 123.75
- GND CON 121.9
- ASPEN TOWER \* 118.85 288.3
- ASPEN DEP CON \* 123.8 288.3
- DENVER CENTER 125.35 327.8
- UNICOM 122.95



SW-1, 10 OCT 2019 to 07 NOV 2019

SW-1, 10 OCT 2019 to 07 NOV 2019

NOTE: GPS required.  
NOTE: RNAV 1.

TAKEOFF MINIMUMS  
Rwy 15: NA - Terrain.  
Rwy 33: 400-1 with minimum climb of 500' per NM to 16000.

NOTE: Chart not to scale.

DEPARTURE ROUTE DESCRIPTION

TAKEOFF RUNWAY 33: Climb heading 331° to at or above 8320 direct ADINY, and climbing right turn to 16000 on track 346° to BOYET, and on track 288° to LINDZ, and on track 247° to GLENO, thence. . . .

. . . .via transition or assigned route, expect clearance to filed altitude 10 minutes after departure.

GRAND JUNCTION TRANSITION (PITKN4.JNC)

MEEKER TRANSITION (PITKN4.EKR)

RIFLE TRANSITION (PITKN4.RIL)