

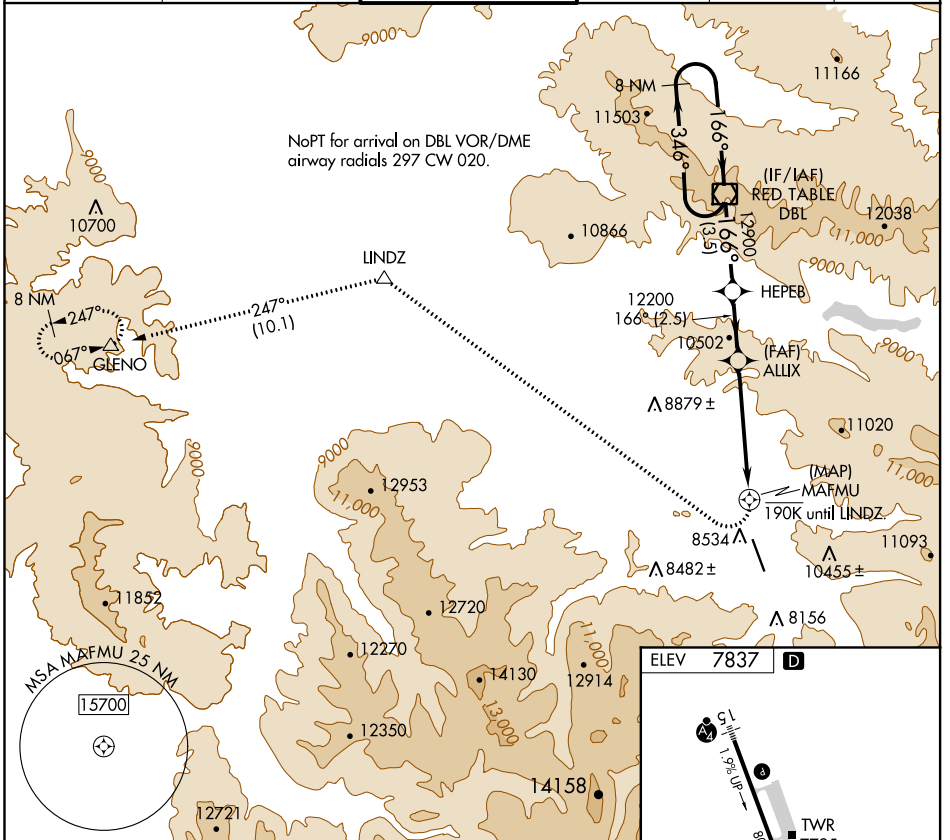
APP CRS <b>166°</b>	Rwy ldg TDZE Apt Elev	<b>N/A</b> <b>N/A</b> <b>7837</b>
------------------------	--------------------------	---

# RNAV (GPS)-F

ASPEN-PITKIN COUNTY/SARDY FIELD (A5E)

	When local altimeter setting not received, procedure NA. DME/DME RNP-0.3 NA. Visibility reduction by helicopters NA. Procedure NA at night.	MISSED APPROACH: Climbing right turn to 14000 direct LINDZ and on track 247° to GLENO and hold.
	-26°C	

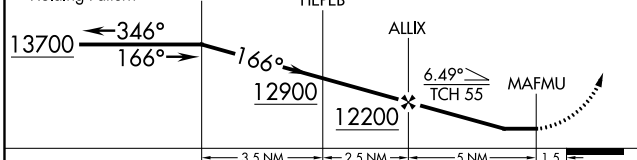
ATIS <b>120.4</b>	ASPEN APP CON ★ <b>123.8 288.3</b>	ASPEN TOWER ★ <b>118.85 (CTAF) 0 288.3</b>	GND CON <b>121.9</b>	CLNC DEL <b>123.75</b>	UNICOM <b>122.95</b>
----------------------	---------------------------------------	---	-------------------------	---------------------------	-------------------------



SW-1, 10 OCT 2019 to 07 NOV 2019

SW-1, 10 OCT 2019 to 07 NOV 2019

VGSIs and descent angles not coincident (VGSIs Angle 3.50/TCH 55).		
14000	LINDZ	GLENO
	△	△
	tr 247°	



ELEV 7837	<b>D</b>
-----------	----------

REIL Rwy 33 **0**  
MIRL Rwy 15-33 **0**

CATEGORY	A	B	C	D
CIRCLING	10200-1 <sup>3</sup> / <sub>4</sub>	2363 (2400-1 <sup>3</sup> / <sub>4</sub> )	10220-3 2383 (2400-3)	NA