

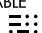
Orig 17229

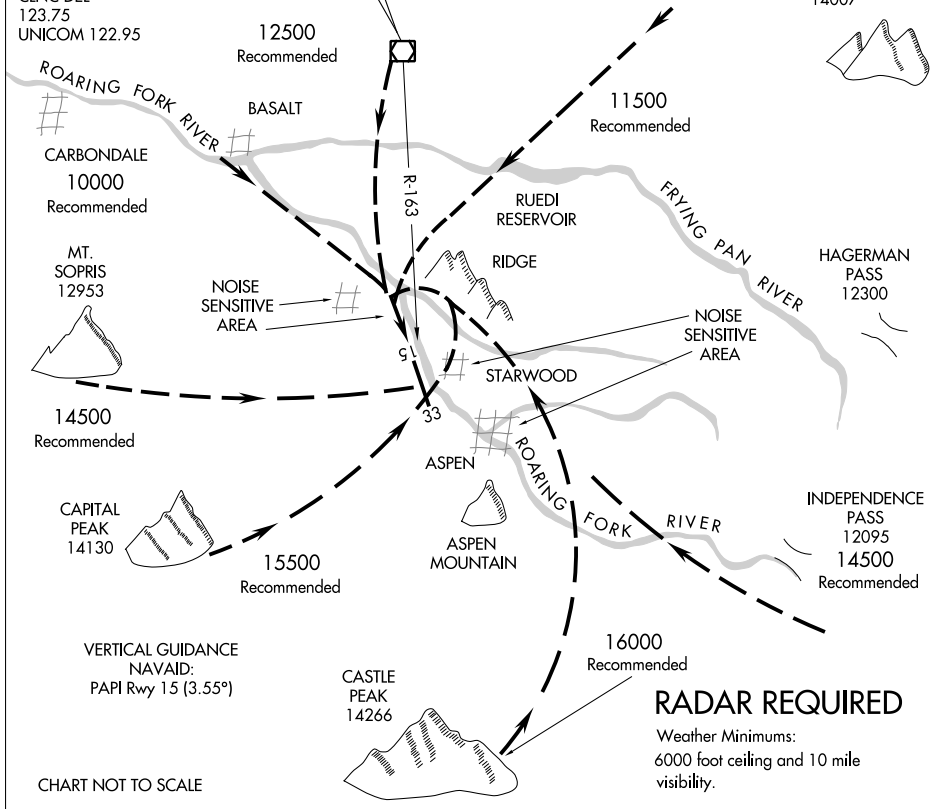
AL-5889 (FAA)

ROARING FORK VISUAL RWY 15

ASPEN-PITKIN COUNTY/SARDY FIELD (A5E)
ASPEN, COLORADO

ATIS 120.4
 ASPEN APP CON *
 123.8 288.3
 ASPEN TOWER *
 118.85 (CTAF) 288.3
 GND CON
 121.9
 CLNC DEL
 123.75
 UNICOM 122.95

RED TABLE
 113.0 DBL 
 Chan 77



SW-1, 10 OCT 2019 to 07 NOV 2019

SW-1, 10 OCT 2019 to 07 NOV 2019

CHART NOT TO SCALE

ROARING FORK VISUAL RWY 15

Procedure not authorized at night.
 When visual approaches to Runway 15 are in progress, clearances will be given utilizing in part the following phraseology:
 "(IDENT) cleared for a ROARING FORK VISUAL Approach to Runway 15."

ROARING FORK VISUAL RWY 15

ASPEN, COLORADO
ASPEN-PITKIN COUNTY/SARDY FIELD (A5E)

Orig 16NOV89

39°13'N-106°52'W