

VOR/DME DBL 113.0 Chan 77	APP CRS 163°	Rwy Idg TDZE Apt Elev N/A 7837
--	------------------------	---

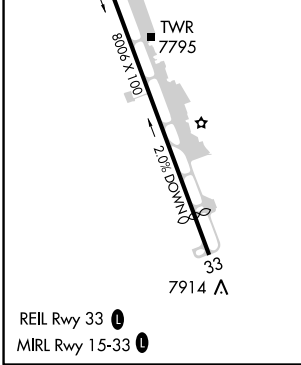
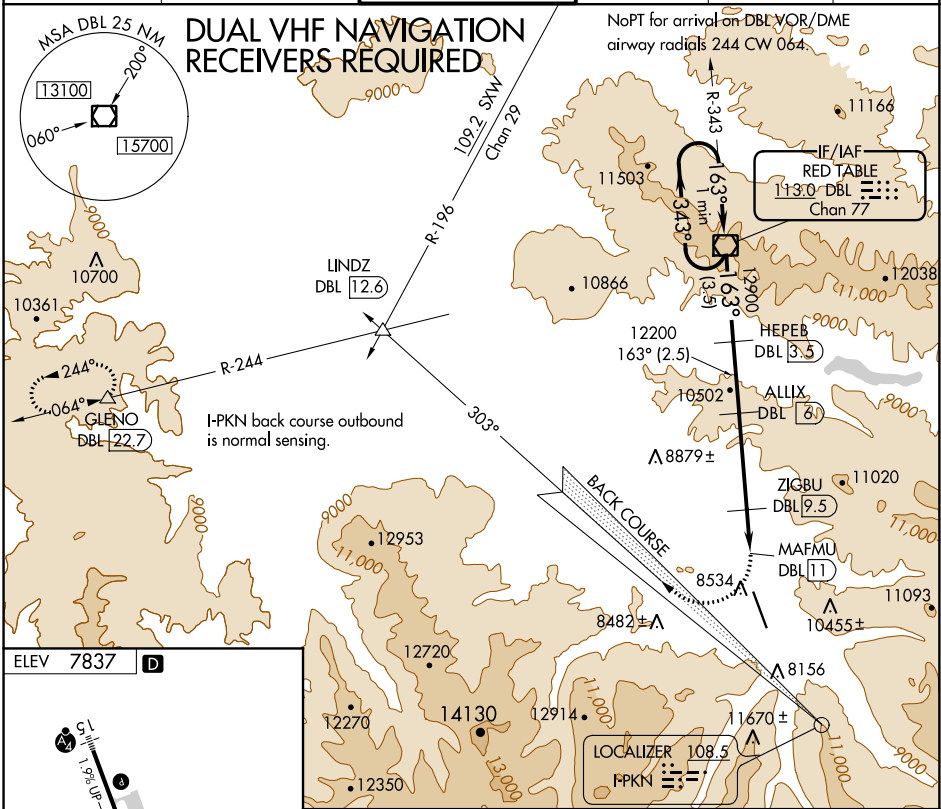
VOR/DME-C

ASPEN-PITKIN COUNTY/SARDY FIELD (ASE)

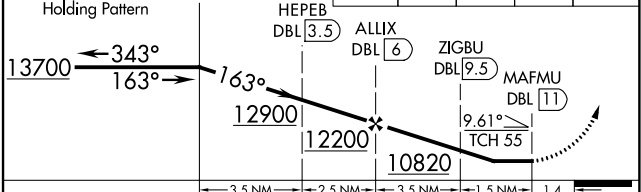
When local altimeter setting not received, procedure NA. Procedure NA at night.
 -26°C

MISSED APPROACH: Climbing right turn to 14000 on heading 300° and I-PKN localizer NW course (303°) to LINDZ INT then on DBL VOR/DME R-244 to GLENO 22.7 DME and hold.

ATIS 120.4	ASPEN APP CON* 123.8 288.3	ASPEN TOWER* 118.85 (CTAF) 288.3	GND CON 121.9	CLNC DEL 123.75	UNICOM 122.95
----------------------	--------------------------------------	--	-------------------------	---------------------------	-------------------------



VGSI and descent angles not coincident (VGSI Angle 3.50/TCH 55). One Minute Holding Pattern	14000 hdg 300°	I-PKN NW crs (303°)	LINDZ	GLENO
DBL VOR/DME			DBL R-244	



CATEGORY	A	B	C	D
CIRCLING	10220-1¾	2383 (2400-1¾)	10220-3 2383 (2400-3)	NA

SW-1, 10 OCT 2019 to 07 NOV 2019

SW-1, 10 OCT 2019 to 07 NOV 2019