

WAAS CH 86510 W35A	APP CRS 342°	Rwy ldg 5003 TDZE 121 Apt Elev 121
--	------------------------	---

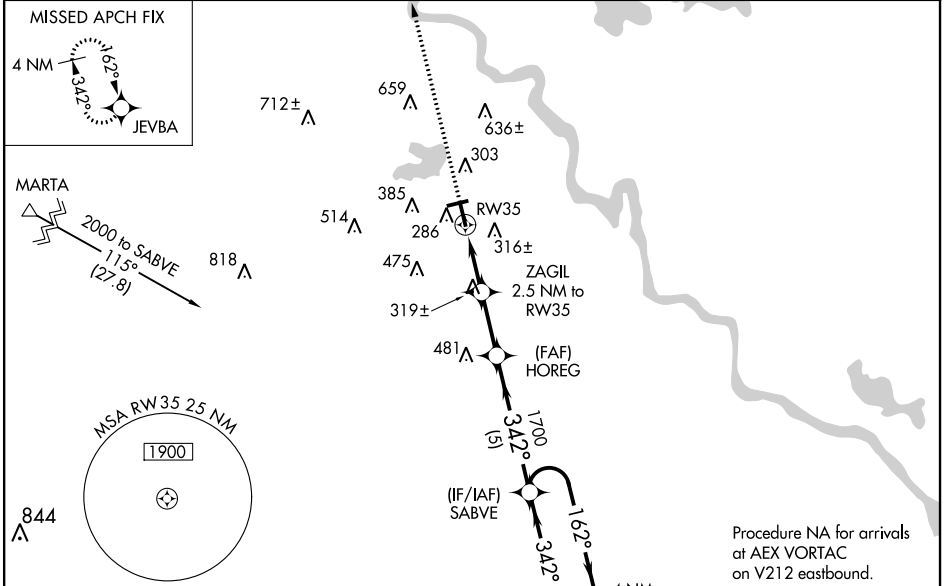
RNAV (GPS) RWY 35

NATCHITOCHES RGNL (IER)

⚠ Inoperative table does not apply to LPV all Cats, and LNAV Cats A and B. Baro-VNAV NA when using Alexandria Intl altimeter setting. For uncompensated Baro-VNAV systems, LNAV/VNAV NA below -1.5°C (5°F) or above 54°C (130°F). DME/DME RNP-0.3 NA. Helicopter visibility reduction below 3/4 SM NA. When local altimeter setting not received, use Alexandria Intl altimeter setting and increase all DA 91 feet and all MDA 100 feet. Increase LNAV/VNAV all Cats, LNAV Cat C and Circling Cat C visibility 1/4 mile. For inoperative ODLAS, increase LNAV/VNAV all Cats visibility 1/2 mile.

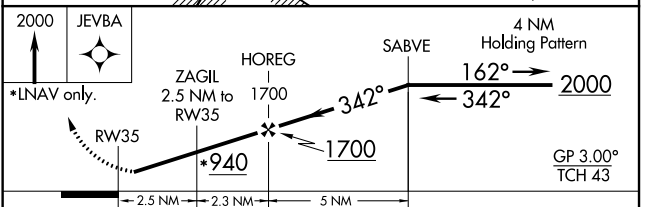
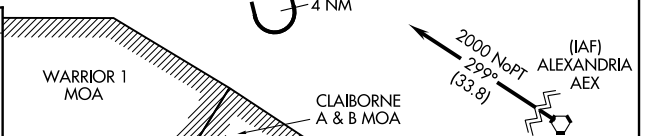
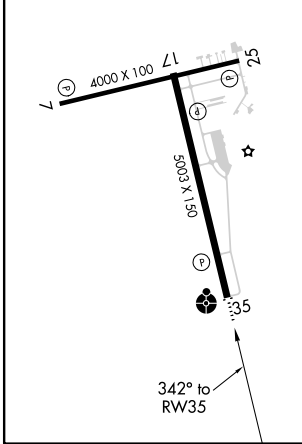
ODALS MISSED APPROACH: Climb to 2000 direct JEVBA and hold.

AWOS-3 119.025	POLK APP CON 125.4 302.2	GCO 135.075	UNICOM 122.8 (CTAF)
--------------------------	------------------------------------	-----------------------	-------------------------------



ELEV 121	TDZE 121
-----------------	-----------------

MIRL Rwy 7-25 and 17-35
REIL Rwy 7 and 17



CATEGORY	A	B	C	D
LPV DA		371-1	250 (300-1)	NA
LNAV/VNAV DA		486-1 1/2	365 (400-1 1/2)	NA
LNAV MDA	580-1	459 (500-1)	580-1 1/2 459 (500-1 1/2)	NA
CIRCLING	680-1 559 (600-1)	740-1 619 (700-1)	740-1 3/4 619 (700-1 3/4)	NA

SC-4, 10 OCT 2019 to 07 NOV 2019

SC-4, 10 OCT 2019 to 07 NOV 2019