

WAAS CH 45737 W16A	APP CRS 155°	Rwy ldg 4997 TDZE 82 Apt Elev 83
--	------------------------	---

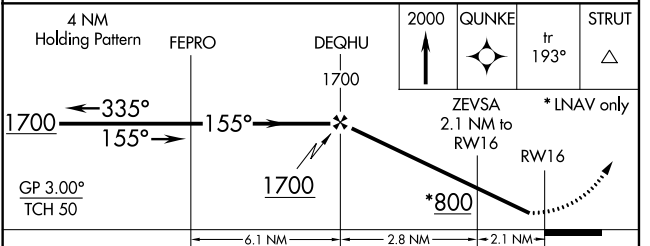
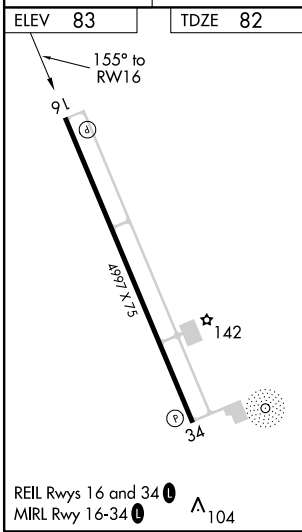
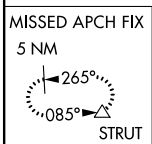
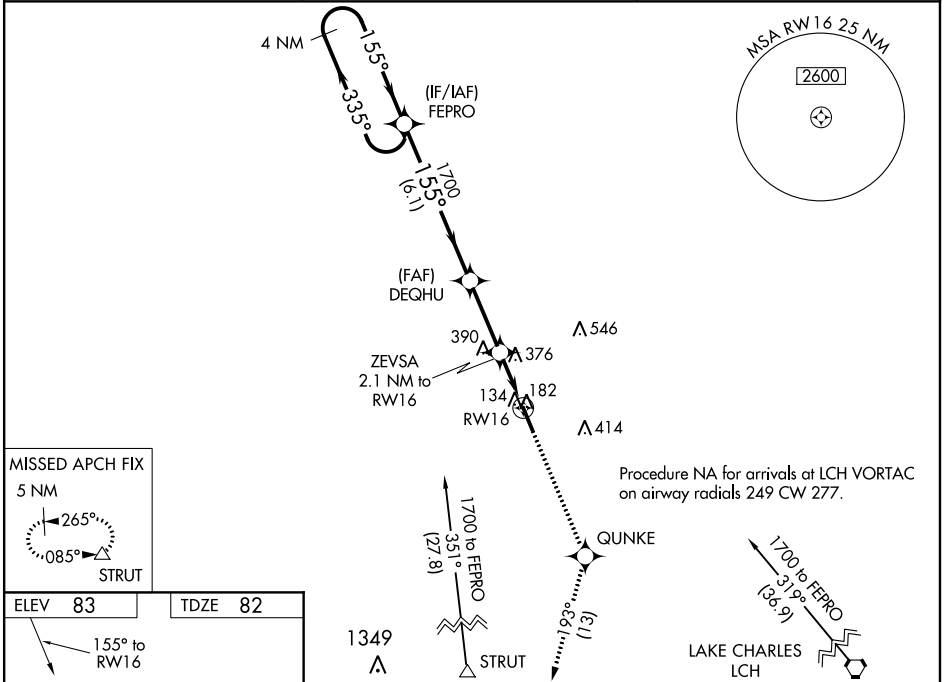
RNAV (GPS) RWY 16

DE QUINCY INDUSTRIAL AIRPARK (5R8)

▼ Baro-VNAV NA when using Sulphur altimeter setting. DME/DME RNP-0.3 NA.
▲ NA When local altimeter setting not received, use Sulphur altimeter setting and increase all DA 55 feet and MDA 60 feet, increase LPV visibility all Cats 1/8, LNAV/VNAV all Cats 1/4 and LNAV and Circling Cat C visibility 1/4 mile. For uncompensated Baro-VNAV systems, LNAV/VNAV NA below -15°C (5°F) or above 54°C (130°F). Helicopter visibility reduction below 1 SM NA. Night landing: Rwy 16 NA.

MISSED APPROACH: Climb to 2000 direct QUNKE and on track 193° to STRUT and hold.

AWOS-3PT 121.2	LAKE CHARLES APP CON * 119.35 282.3	UNICOM 122.8 (CTAF) 0
--------------------------	---	---------------------------------



CATEGORY	A	B	C	D
LPV DA	365-1 283 (300-1)			NA
LNAV/VNAV DA	799-2 1/2 717 (800-2 1/2)			NA
LNAV MDA	700-1	618 (700-1)	700-1 3/4 618 (700-1 3/4)	NA
C CIRCLING	700-1 617 (700-1)	740-1 657 (700-1)	740-1 3/4 657 (700-1 3/4)	NA

SC-4, 10 OCT 2019 to 07 NOV 2019

SC-4, 10 OCT 2019 to 07 NOV 2019