

WAAS CH 87036 W34A	APP CRS 335°	Rwy Idg TDZE Apt Elev	4997 83 83
--	------------------------	-----------------------------	---------------------------------------

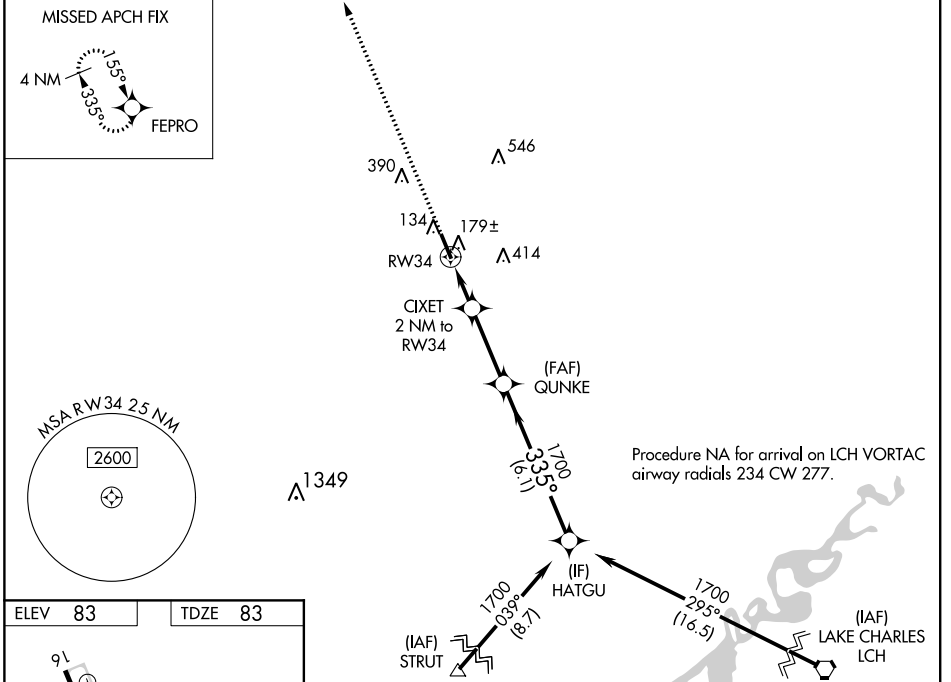
RNAV (GPS) RWY 34

DE QUINCY INDUSTRIAL AIRPARK (5R.8)

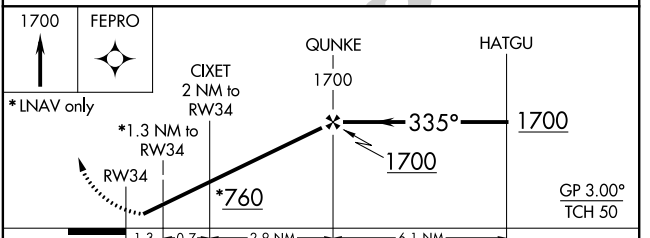
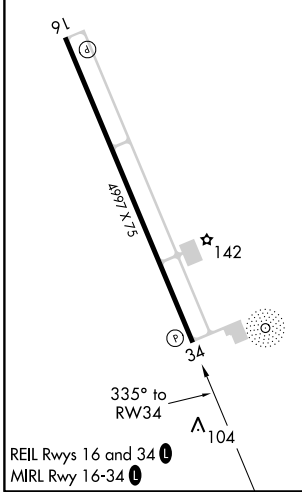
NA For uncompensated Baro-VNAV systems, LNAV/VNAV NA below -15°C (5°F) or above 54°C (130°F). DME/DME RNP-0.3 NA. Helicopter visibility reduction below ¾ SM NA. When local altimeter setting not received, use Sulphur altimeter setting and increase all DA 55 feet and MDA 60 feet, increase LPV and LNAV/VNAV visibility all Cats ¼, LNAV and Circling Cat C visibility ½ mile. Baro-VNAV and VDP NA with Sulphur altimeter setting. Night landing Rwy 16 NA.

MISSED APPROACH: Climb to 1700 direct FEPRO and hold.

AWOS-3PT 121.2	LAKE CHARLES APP CON ★ 119.35 282.3	UNICOM 122.8 (CTAF) 0
--------------------------	---	---------------------------------



ELEV 83	TDZE 83
----------------	----------------



CATEGORY	A			B	C	D
	LPV DA	339-¾	256 (300-¾)	250 (300-¾)	540-1 3/8	NA
LNAV/VNAV DA	333-¾	250 (300-¾)			457 (500-1 3/8)	NA
LNAV MDA	540-1	457 (500-1)			540-1 3/8	NA
C CIRCLING	540-1	740-1	740-1 3/4		657 (700-1 3/4)	NA
	457 (500-1)	657 (700-1)	657 (700-1 3/4)			

SC-4, 10 OCT 2019 to 07 NOV 2019

SC-4, 10 OCT 2019 to 07 NOV 2019