

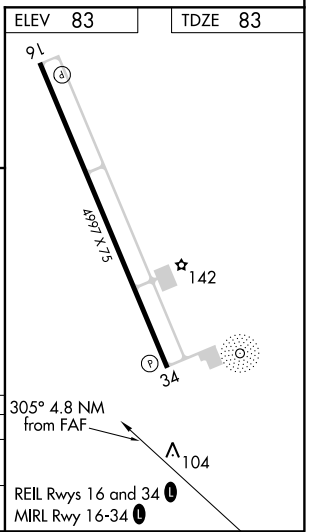
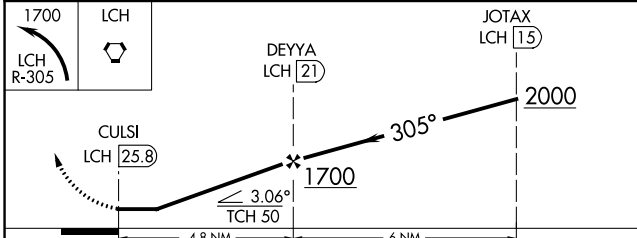
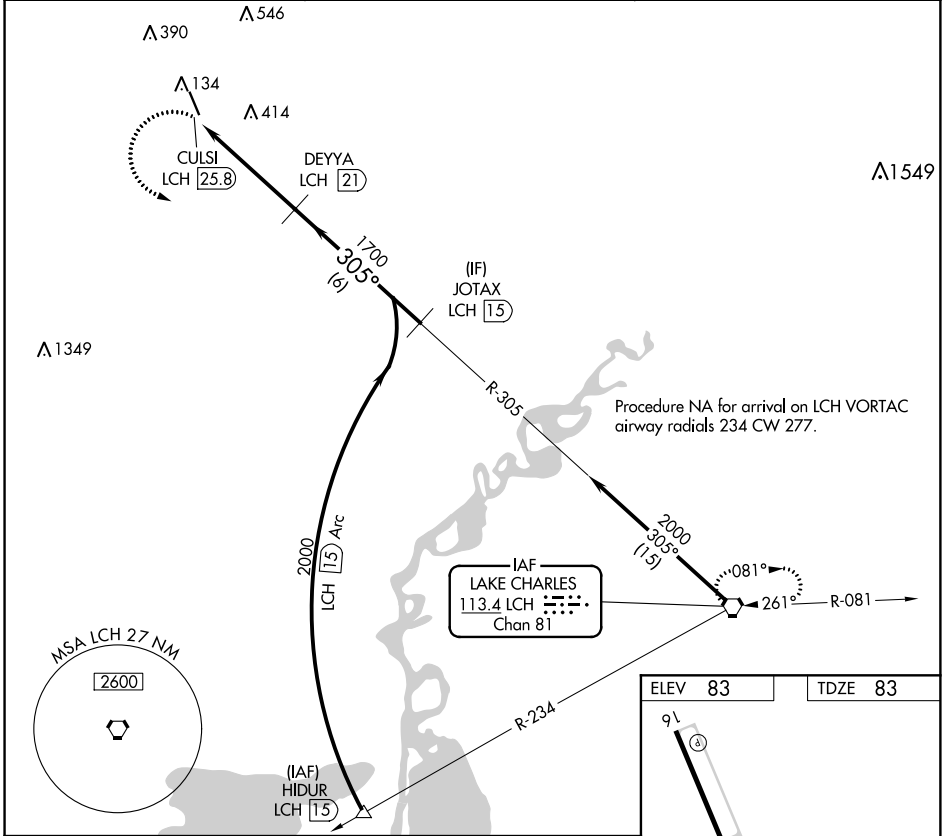
VORTAC LCH 113.4 Chan 81	APP CRS 305°	Rwy Idg TDZE Apt Elev 4997 83 83
--	------------------------	--

VOR/DME RWY 34
DE QUINCY INDUSTRIAL AIRPARK (5R8)

▼ Helicopter visibility reduction below 1 SM NA. Procedure NA at night.
▲ NA When local altimeter setting not received, use Sulphur altimeter setting and increase all MDA 60 feet and S-34 Cat C visibility 1/8 mile.

MISSED APPROACH: Climbing left turn to 1700 on LCH VORTAC R-305 to LCH VORTAC and hold.

AWOS-3PT 121.2	LAKE CHARLES APP CON * 119.35 282.3	UNICOM 122.8 (CTAF) 0
--------------------------	---	---------------------------------



CATEGORY	A	B	C	D
S-34	760-1	677 (700-1)	760-1 7/8 677 (700-1 7/8)	NA
C CIRCLING	760-1	677 (700-1)	760-2 677 (700-2)	NA

SC-4, 10 OCT 2019 to 07 NOV 2019

SC-4, 10 OCT 2019 to 07 NOV 2019