

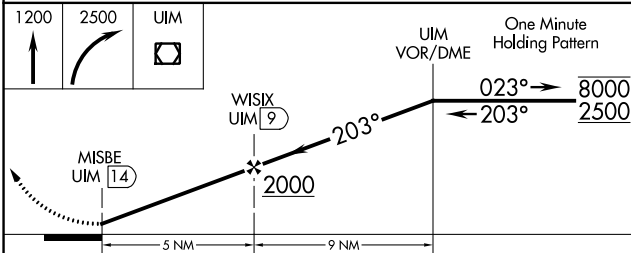
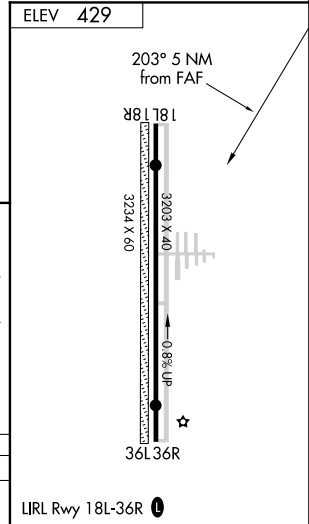
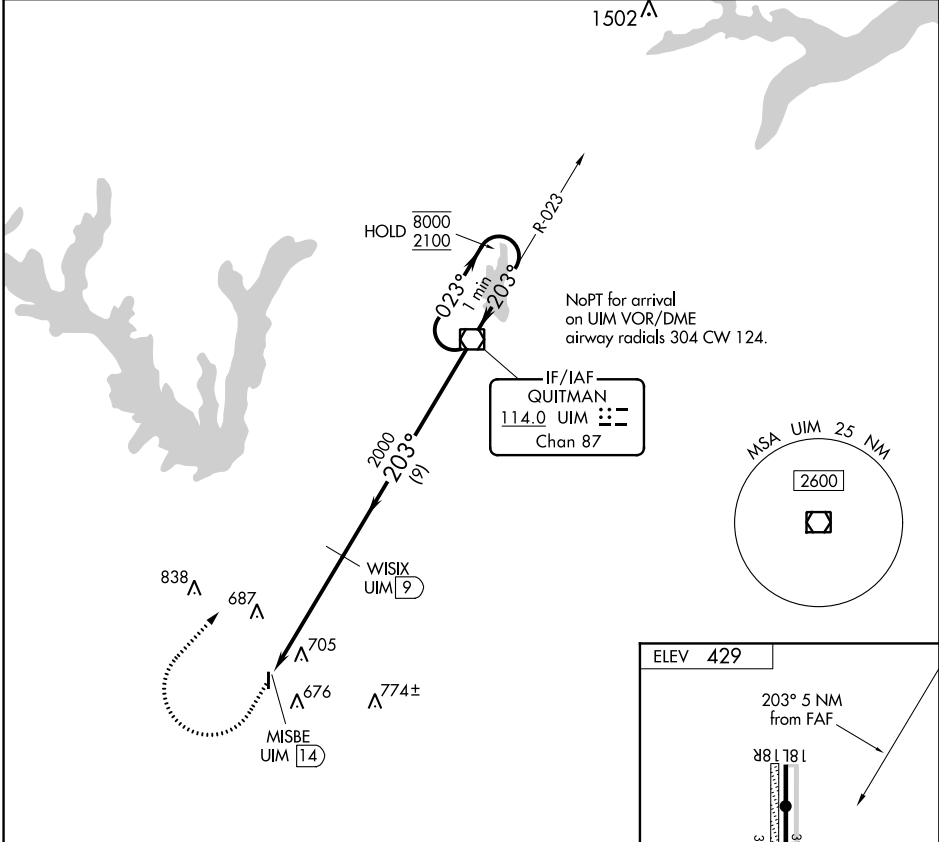
VOR/DME UIM 114.0 Chan 87	APP CRS 203°	Rwy Idg TDZE Apt Elev	N/A N/A 429
---	------------------------	-----------------------------	--

VOR-A
MINEOLA WISENER FIELD (3F9)

DME required.
 Use Tyler altimeter setting; when not received, use Longview altimeter setting and increase all MDA 60 feet.
 Circling NA to Rwys 18R and 36L.

MISSED APPROACH: Climb to 1200 then climbing right turn to 2500 direct UIM VOR/DME and hold.

TYR ASOS 126.25	LONGVIEW APP CON* 128.75 379.15	UNICOM 122.8 (CTAF) 0
---------------------------	---	---------------------------------



CATEGORY	A	B	C	D
CIRCLING	1040-1 611 (700-1)	1080-1 651 (700-1)	NA	

SC-2, 10 OCT 2019 to 07 NOV 2019

SC-2, 10 OCT 2019 to 07 NOV 2019