

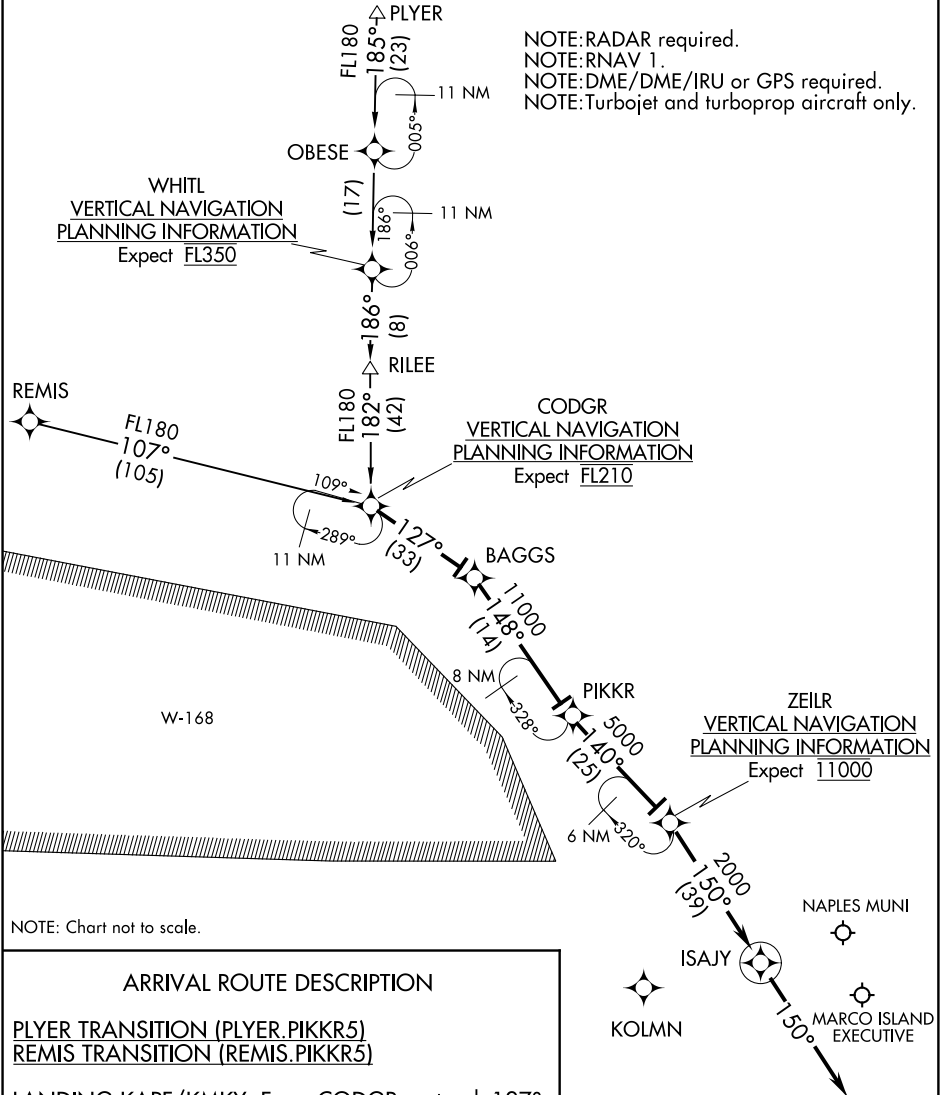
★ FORT MYERS APP CON
125.15 306.2
NAPLES MUNI ATIS
134.225

NOTE: RADAR required.
NOTE: RNAV 1.
NOTE: DME/DME/IRU or GPS required.
NOTE: Turbojet and turboprop aircraft only.

WHITL
VERTICAL NAVIGATION
PLANNING INFORMATION
Expect FL350

CODGR
VERTICAL NAVIGATION
PLANNING INFORMATION
Expect FL210

ZEILR
VERTICAL NAVIGATION
PLANNING INFORMATION
Expect 11000



NOTE: Chart not to scale.

ARRIVAL ROUTE DESCRIPTION

PLYER TRANSITION (PLYER.PIKKR5)
REMIS TRANSITION (REMIS.PIKKR5)

LANDING KAPF/KMKY: From CODGR on track 127° to BAGGS, then on track 148° to PIKKR, then on track 140° to ZEILR, then on track 150° to ISAJY, then on heading 150° or as assigned by ATC. Expect RADAR vectors to final approach course.

SE-3, 10 OCT 2019 to 07 NOV 2019

SE-3, 10 OCT 2019 to 07 NOV 2019