

APP CRS <b>290°</b>	Rwy Idg <b>3999</b>
	TDZE <b>660</b>
	Apt Elev <b>660</b>

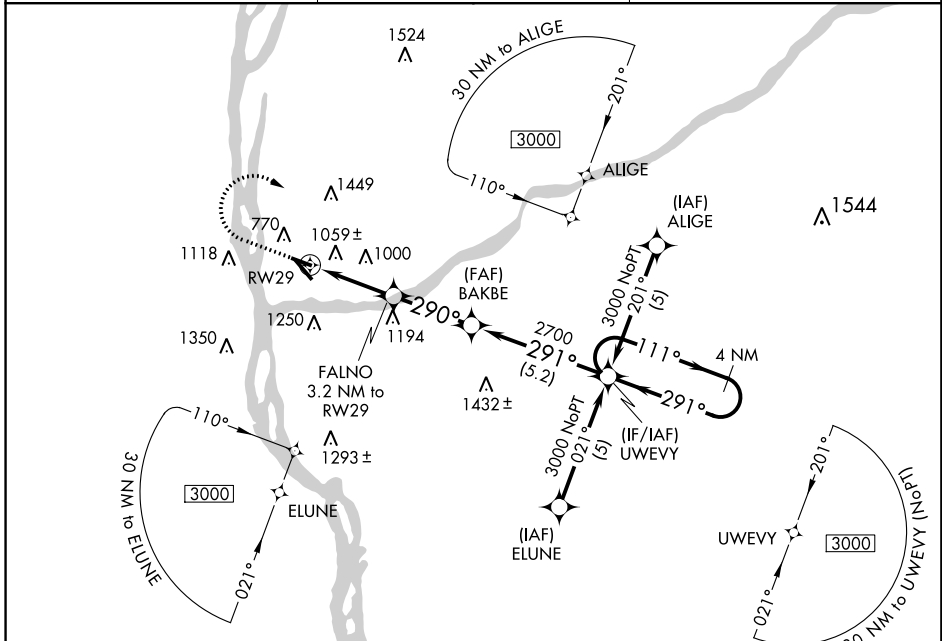
# RNAV (GPS) RWY 29

PRAIRIE DU CHIEN MUNI (PDC)

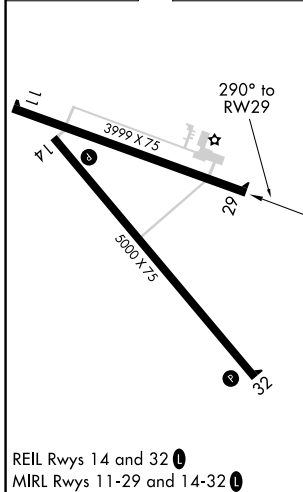
**▼** DME/DME RNP-0.3 NA.  
**▲** Night landing: Rwy 11, 32 NA.  
 Helicopter visibility reduction below 3/4 SM NA.

MISSED APPROACH: Climb to 2000 then climbing right turn to 3000 direct UWEVY and hold.

AWOS-3 <b>119.925</b>	CHICAGO CENTER <b>133.95 281.4</b>	UNICOM <b>122.8 (CTAF) 0</b>
--------------------------	---------------------------------------	---------------------------------



ELEV 660	TDZE 660
----------	----------



	2000	3000	UWEVY	
	↑	↪	✦	
			FALNO 3.2 NM to RW29	BAKBE UWEVY 4 NM Holding Pattern
			2.5 NM to RW29	3000
			1740	291°
			290°	2700
			2.5 NM	0.7 NM
			3 NM	5.2 NM
CATEGORY	A	B	C	D
LNAV MDA	1520-1 860 (900-1)	1520-1¼ 860 (900-1¼)	1520-2½	860 (900-2½)
CIRCLING	1580-1¼	920 (1000-1¼)	1800-3	1140 (1200-3)

EC-3, 10 OCT 2019 to 07 NOV 2019

EC-3, 10 OCT 2019 to 07 NOV 2019