

LOC/DME I-DJK <b>109.95</b> Chan <b>36</b> (Y)	APP CRS <b>022°</b>	Rwy Idg <b>7026</b> TDZE <b>913</b> Apt Elev <b>914</b>
--	------------------------	---

**ILS or LOC RWY 2**  
DE KALB TAYLOR MUNI (DKB)

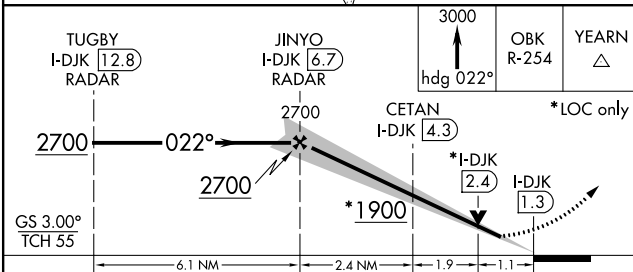
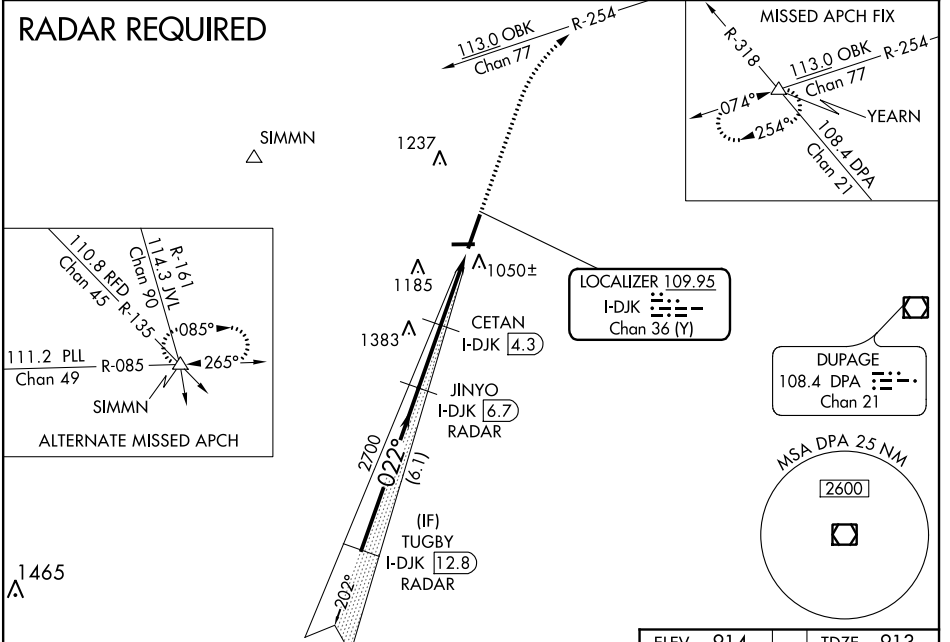
⚠ VDP NA when using Aurora altimeter setting. When local altimeter setting not received, use Aurora altimeter setting and increase all DA 61 feet and all MDA 80 feet, CETAN fix minimums increase Circling Cat C/D visibility ½ mile. For inoperative MALSR, increase S-ILS 2 all Cats visibility to ¾ mile. CETAN fix minimums: For inoperative MALSR, increase S-LOC 2 Cat C/D visibility to 1 mile.

**MALSR** MISSED APPROACH: Climb to 3000 on heading 022° and OBK VOR/DME R-254 to YEARN Int and hold.

AWOS-3 <b>119.075</b>	CHICAGO APP CON <b>133.5 349.0</b>
--------------------------	---------------------------------------

UNICOM <b>122.7</b> (CTAF)
-------------------------------

**RADAR REQUIRED**



CATEGORY	A		B		C		D	
S-ILS 2	1113-½		200 (200-½)					
S-LOC 2	1900-¾ 987 (1000-¾)	1900-1 987 (1000-1)	1900-2½	987 (1000-2½)				
CIRCLING	1900-1¼ 986 (1000-1¼)	1900-1½ 986 (1000-1½)	1900-3	986 (1000-3)				
CETAN FIX MINIMUMS								
S-LOC 2	1280-½	367 (400-½)	1280-¾	367 (400-¾)				
CIRCLING	1360-1 446 (500-1)	1480-1 566 (600-1)	1540-1¾ 626 (700-¾)	1540-2 626 (700-2)				

ELEV 914	TDZE 913
REIL Rwys 9, 20 and 27	
MIRL Rwys 2-20 and 9-27	
FAF to MAP 5.4 NM	
Knots	60 90 120 150 180
Min:Sec	5:24 3:36 2:42 2:10 1:48

EC-3, 10 OCT 2019 to 07 NOV 2019

EC-3, 10 OCT 2019 to 07 NOV 2019