

APP CRS	Rwy Idg	5004
012°	TDZE	278
	Apt Elev	278

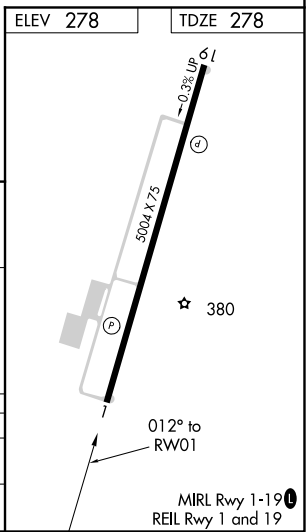
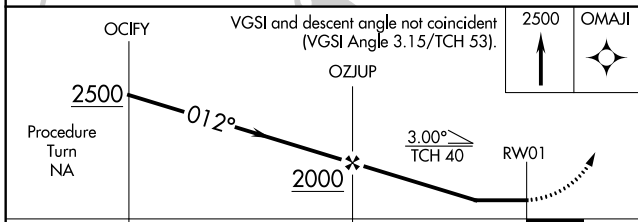
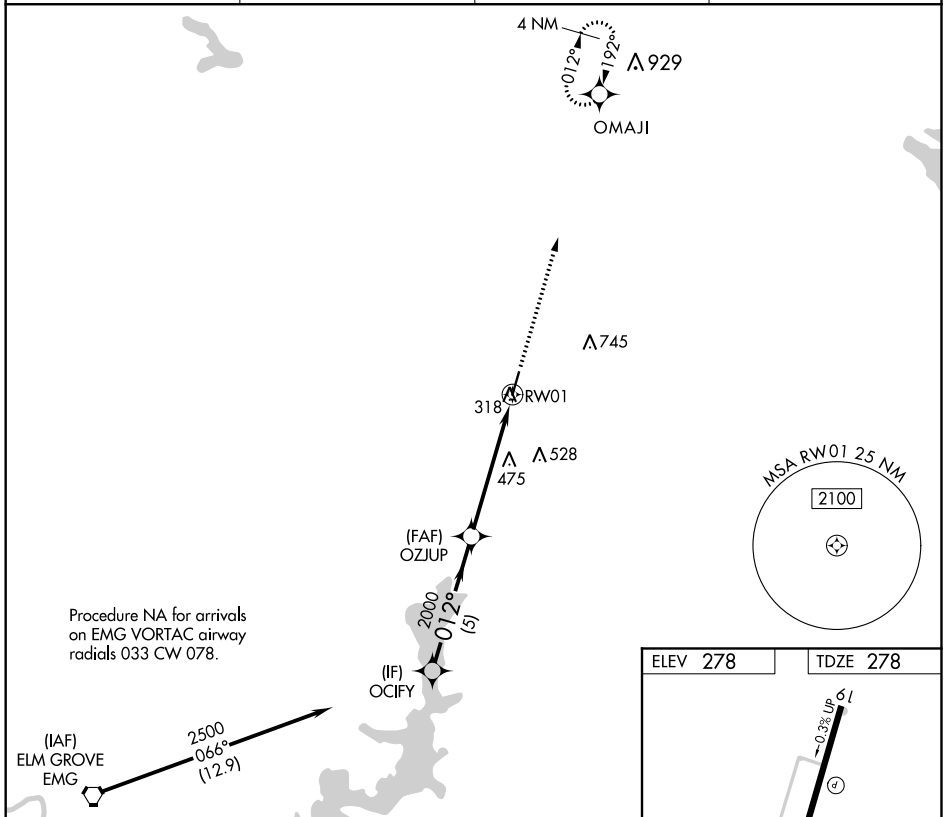
RNAV (GPS) RWY 1

MINDEN (MNE)

⚠ When VGSI inop, procedure NA at night. DME/DME RNP-0.3 NA. Helicopter visibility reduction below 1 SM NA. When local altimeter setting not received, use Barksdale AFB altimeter setting and increase all MDA 80 feet: visibility LNAV Cat C and D and Circling Cat C to 1¼.

⚠ MISSED APPROACH: Climb to 2500 direct OMAJI and hold.

AWOS-3PT 119.325	SHREVEPORT APP CON 118.6 350.2	GCO 135.075	UNICOM 122.8 (CTAF) Ⓛ
----------------------------	--	-----------------------	--



CATEGORY	A	B	C	D
LNAV MDA	780-1	502 (600-1)	780-1¾	502 (600-1¾)
CIRCLING	780-1 502 (600-1)	820-1 542 (600-1)	820-1½ 542 (600-1½)	840-2 562 (600-2)

SC-4, 10 OCT 2019 to 07 NOV 2019

SC-4, 10 OCT 2019 to 07 NOV 2019