

(BLTWY6.BLTWY) 19115

AL-6073 (FAA)

CLEVELAND MUNI (6R3)
CLEVELAND, TEXAS

BLTWY SIX DEPARTURE (RNAV)

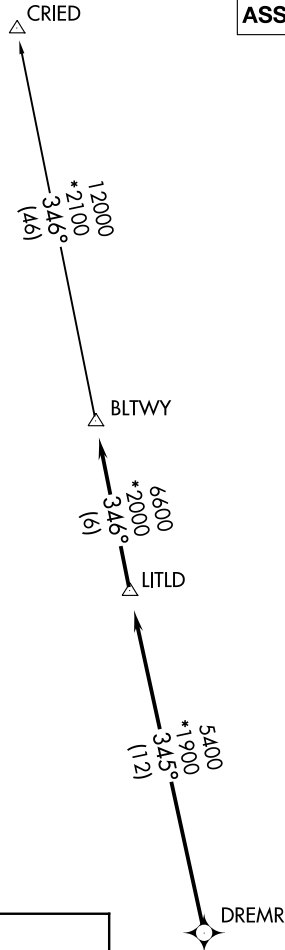
AWOS-3
119.325
CTAF
123.0
HOUSTON DEP CON
119.7 281.4

**TOP ALTITUDE:
ASSIGNED BY ATC**

NOTE: RADAR required.
NOTE: DME/DME/IRU or GPS required.
NOTE: RNAV 1.

TAKEOFF MINIMUMS

Rwy 16, 34: Standard with minimum climb
of 500' per NM to 660.



DEPARTURE ROUTE DESCRIPTION

TAKEOFF RWY 16: Climb on heading 157° to 1400 for
RADAR vectors to DREMR, thence

TAKEOFF RWY 34: Climb on heading 312° to 2000 for
RADAR vectors to DREMR, thence

...on track 345° to LITLD, then on track 346° to BLTWY,
then on (transition). Maintain ATC assigned altitude.
Expect filed altitude 10 minutes after departure.

CRIED TRANSITION (BLTWY6.CRIED)

NOTE: Chart not to scale.

BLTWY SIX DEPARTURE (RNAV)

(BLTWY6.BLTWY) 25APR19

CLEVELAND, TEXAS
CLEVELAND MUNI (6R3)

SC-5, 10 OCT 2019 to 07 NOV 2019

SC-5, 10 OCT 2019 to 07 NOV 2019