

(INDIE7.INDIE) 19115

AL-6073 (FAA)

CLEVELAND MUNI (6R3)  
CLEVELAND, TEXAS

# INDIE SEVEN DEPARTURE (RNAV)

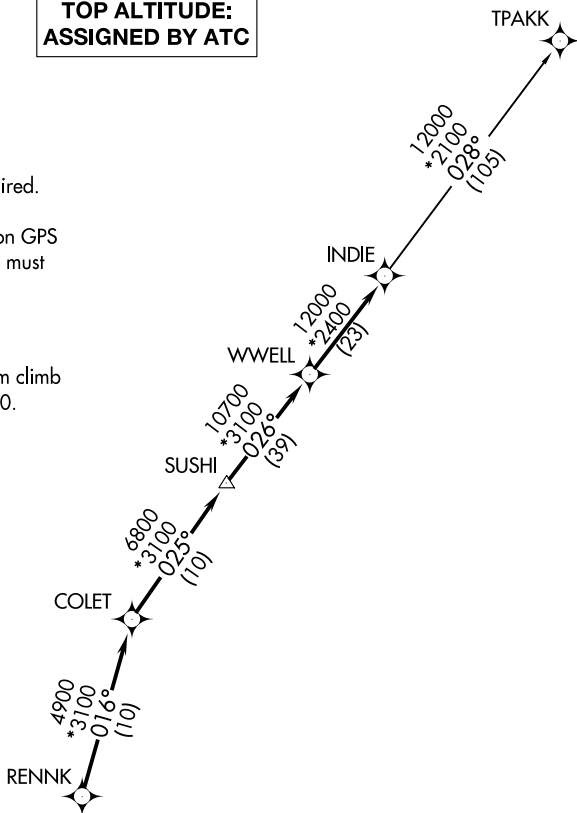
AWOS-3  
119.325  
CTAF  
123.0  
HOUSTON DEP CON  
119.7 281.4

**TOP ALTITUDE:  
ASSIGNED BY ATC**

NOTE: RADAR required.  
NOTE: DME/DME/IRU or GPS required.  
NOTE: RNAV 1.  
NOTE: TPAKK TRANSITION: For non GPS  
equipped aircraft TNV DME must  
be operational.

### TAKEOFF MINIMUMS

Rwy 16, 34: Standard with minimum climb  
of 500' per NM to 660.



SC-5, 10 OCT 2019 to 07 NOV 2019

SC-5, 10 OCT 2019 to 07 NOV 2019

### DEPARTURE ROUTE DESCRIPTION

TAKEOFF RWY 16: Climb heading 157° to 1400  
for RADAR vectors to RENNK, thence . . . .

TAKEOFF RWY 34: Climb heading 312° to 2000  
for RADAR vectors to RENNK, thence . . . .

. . . . on track 016° to COLET, then on track 025°  
to SUSHI, then on track 026° to WWELL, then on  
track 026° to INDIE, then on (transition). Maintain  
ATC assigned altitude. Expect filed altitude 10  
minutes after departure.

TPAKK TRANSITION (INDIE7.TPAKK)



NOTE: Chart not to scale.

# INDIE SEVEN DEPARTURE (RNAV)

(INDIE7.INDIE) 25APR19

CLEVELAND, TEXAS  
CLEVELAND MUNI (6R3)