

# KARRR FIVE DEPARTURE (RNAV)

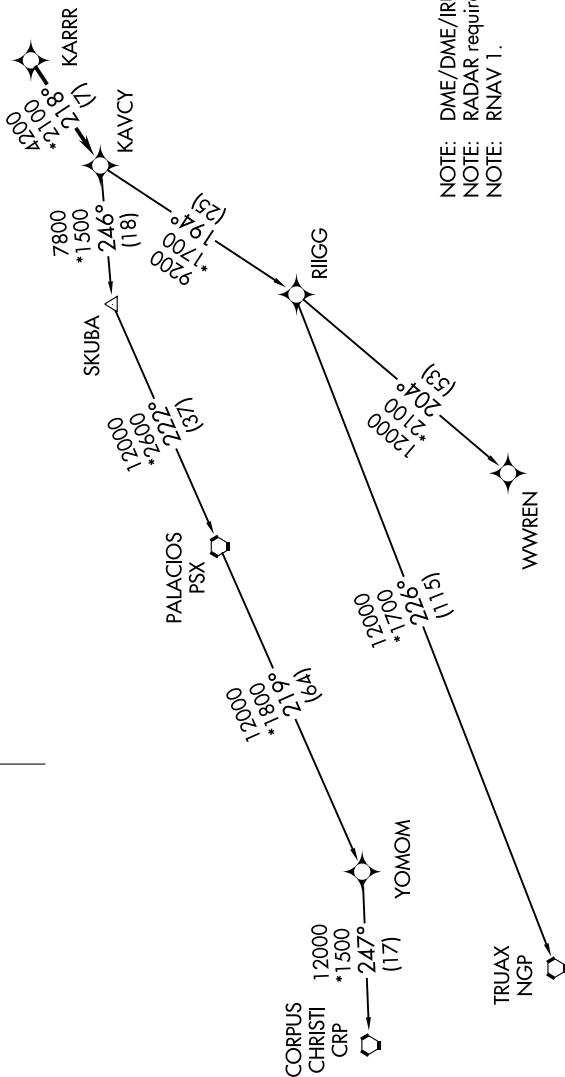
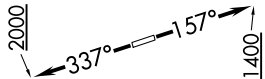
SC-5, 10 OCT 2019 to 07 NOV 2019

AWOS-3  
119.325  
CTAF  
123.0  
HOUSTON DEP CON  
119.7 281.4

**TAKEOFF MINIMUMS:**  
Rwy 16, 34: Standard with minimum  
climb of 500' per NM to 660.



**TOP ALTITUDE:  
ASSIGNED BY ATC**



NOTE: DME/DME/IRU or GPS required.  
NOTE: RADAR required.  
NOTE: RNAV 1.

NOTE: Chart not to scale.

(NARRATIVE ON FOLLOWING PAGE)

SC-5, 10 OCT 2019 to 07 NOV 2019