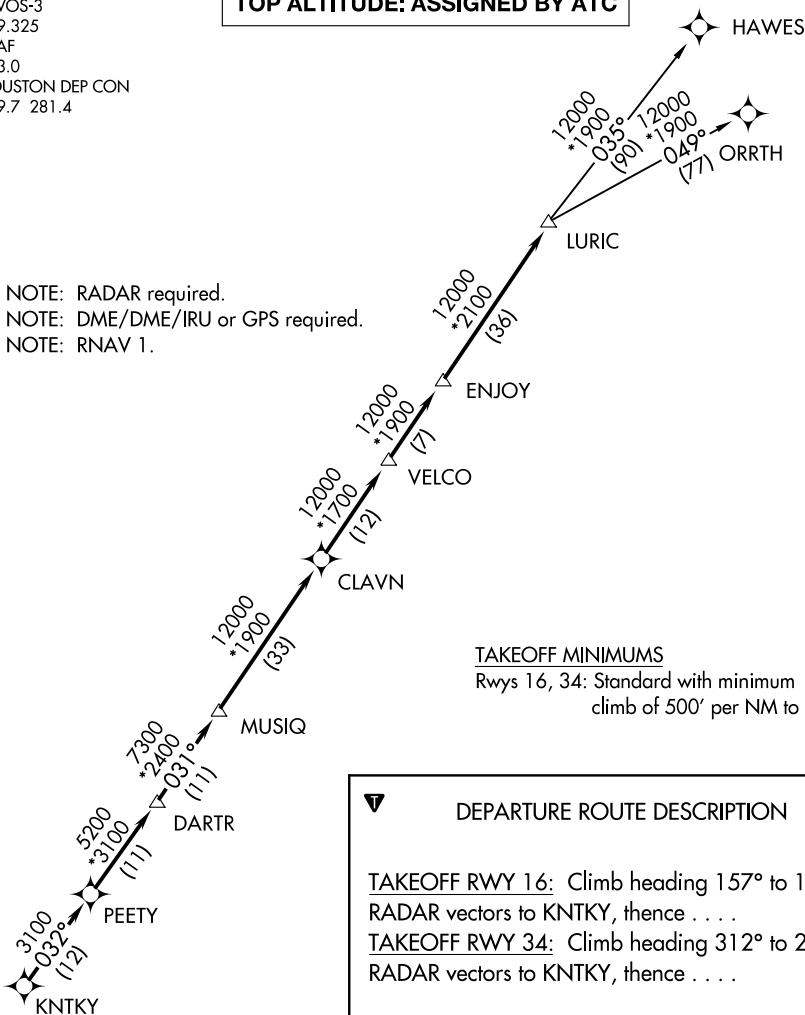


# LURIC SEVEN DEPARTURE (RNAV)

AWOS-3  
119.325  
CTAF  
123.0  
HOUSTON DEP CON  
119.7 281.4

**TOP ALTITUDE: ASSIGNED BY ATC**

NOTE: RADAR required.  
NOTE: DME/DME/IRU or GPS required.  
NOTE: RNAV 1.



### TAKEOFF MINIMUMS

Rwys 16, 34: Standard with minimum climb of 500' per NM to 660.

### DEPARTURE ROUTE DESCRIPTION

**TAKEOFF RWY 16:** Climb heading 157° to 1400 for RADAR vectors to KNTKY, thence . . . .

**TAKEOFF RWY 34:** Climb heading 312° to 2000 for RADAR vectors to KNTKY, thence . . . .

. . . . on track 032° to PEETY, then on track 032° to DARTR, then on track 031° to MUSIQ, then on track 031° to CLAVN, then on track 031° to VELCO, then on track 031° to ENJOY, then on track 031° to LURIC, then on (transition). Maintain ATC assigned altitude. Expect filed altitude 10 minutes after departure.

HAWES TRANSITION (LURIC7.HAWES)

ORRTH TRANSITION (LURIC7.ORRTH)



NOTE: Chart not to scale.

SC-5, 10 OCT 2019 to 07 NOV 2019

SC-5, 10 OCT 2019 to 07 NOV 2019