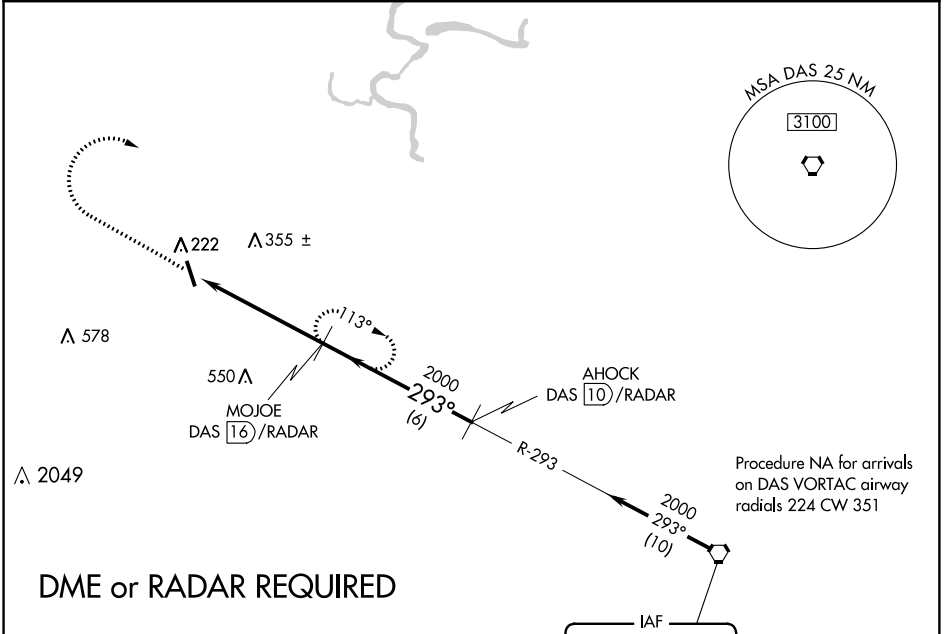


VORTAC DAS <b>116.9</b> Chan <b>116</b>	APP CRS <b>293°</b>	Rwy Idg TDZE Apt Elev	<b>N/A</b> <b>N/A</b> <b>150</b>
---	------------------------	-----------------------------	--

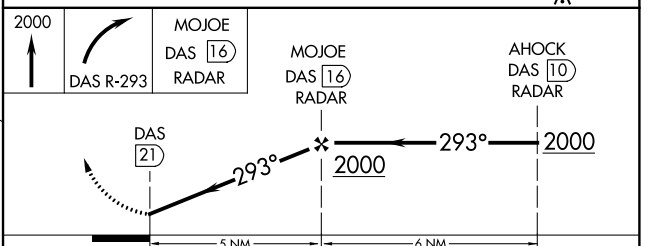
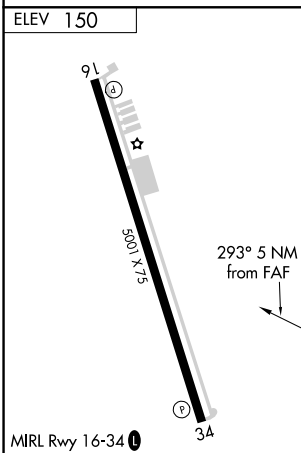
**VOR-A**  
CLEVELAND MUNI (6R3)

**NA** When local altimeter setting not received, use George Bush Intercontinental/Houston altimeter setting. MISSED APPROACH: Climb to 2000 then right turn via DAS R-293 to MOJOE/DAS 16 DME/RADAR and hold.

AWOS-3 <b>119.325</b>	HOUSTON APP CON <b>119.7 281.4</b>	UNICOM <b>123.0 (CTAF) 0</b>
--------------------------	---------------------------------------	---------------------------------



**DME or RADAR REQUIRED**



FAF to MAP 5 NM						
Knots	60	90	120	150	180	
Min:Sec	5:00	3:20	2:30	2:00	1:40	
CATEGORY	A		B		C	D
CIRCLING	680-1 530 (600-1)		680-1¼ 530 (600-1¼)		NA	

SC-5, 10 OCT 2019 to 07 NOV 2019

SC-5, 10 OCT 2019 to 07 NOV 2019