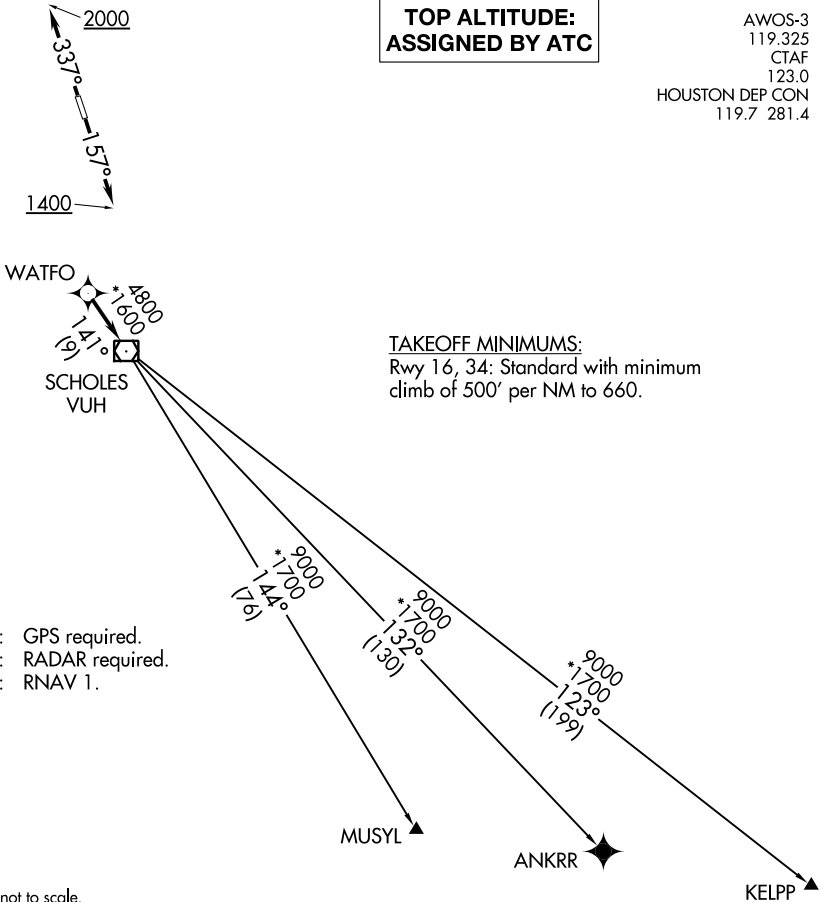


WATFO FIVE DEPARTURE (RNAV)

**TOP ALTITUDE:
ASSIGNED BY ATC**

AWOS-3
119.325
CTAF
123.0
HOUSTON DEP CON
119.7 281.4



NOTE: GPS required.
NOTE: RADAR required.
NOTE: RNAV 1.

NOTE: Chart not to scale.

DEPARTURE ROUTE DESCRIPTION

TAKEOFF RWY 16: Climb on heading 157° to 1400, for RADAR vectors to WATFO, thence. . . .

TAKEOFF RWY 34: Climb on heading 337° to 2000, for RADAR vectors to WATFO, thence. . . .

. . . on track 141° to VUH VOR/DME, then on (transition). Maintain ATC assigned altitude. Expect filed altitude 10 minutes after departure.

ANKRR TRANSITION (WATFO5.ANKRR)

KELPP TRANSITION (WATFO5.KELPP)

MUSYL TRANSITION (WATFO5.MUSYL)

WATFO FIVE DEPARTURE (RNAV)