

WAAS CH 78427 W18A	APP CRS 181°	Rwy ldg TDZE Apt Elev	4100 905 906
--	------------------------	-----------------------------	---

RNAV (GPS) RWY 18

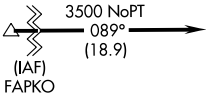
REEDSBURG MUNI (C35)

NA Use Baraboo altimeter setting; when not received, use Lone Rock altimeter setting and increase all MDA 60 feet. DME/DME RNP-0.3 NA. Procedure NA at night. Visibility reduction by helicopters NA.

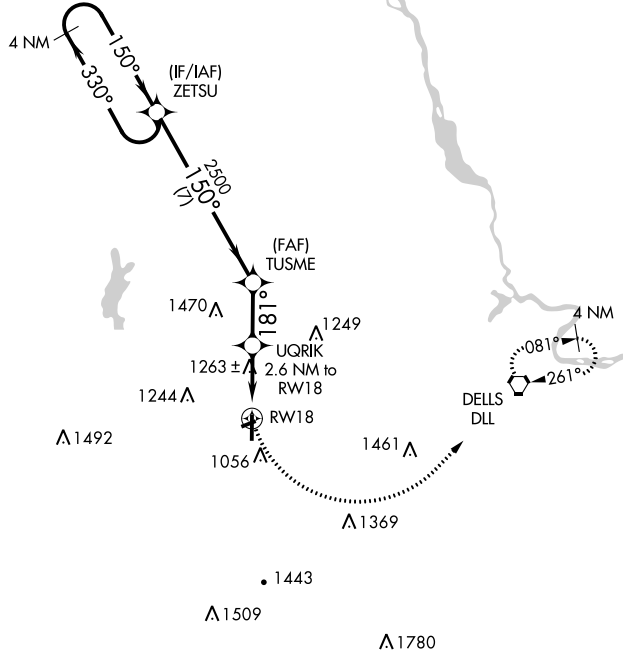
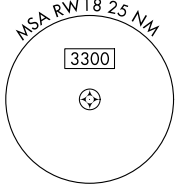
MISSED APPROACH: Climbing left turn to 3500 direct DLL VORTAC and hold.

AWOS-3PT 118.95	BARABOO AWOS-3 118.325	MADISON APP CON★ 135.45 343.7	GCO 121.725	UNICOM 122.8 (CTAF) 0
---------------------------	----------------------------------	---	-----------------------	--

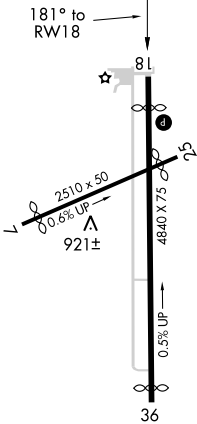
△1821



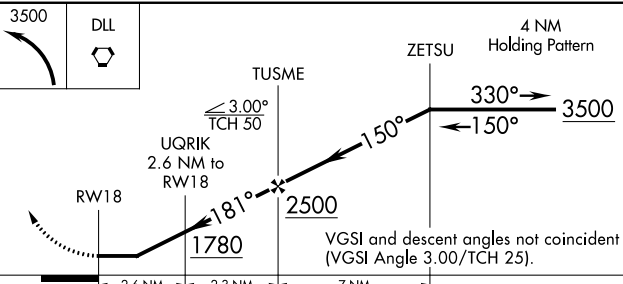
Procedure NA for arrivals at FAPKO on V82-170-510 westbound.



ELEV 906	D	TDZE 905
----------	----------	----------



REIL Rwy 18 and 36 **0**
MIRL Rwy 7-25 and 18-36 **0**



		2.6 NM	2.3 NM	7 NM	
CATEGORY	A	B	C	D	
LP MDA	1560-1	655 (700-1)		NA	
LNAV MDA	1580-1	675 (700-1)		NA	
CIRCLING	1600-1	694 (700-1)		NA	

EC-3, 10 OCT 2019 to 07 NOV 2019

EC-3, 10 OCT 2019 to 07 NOV 2019