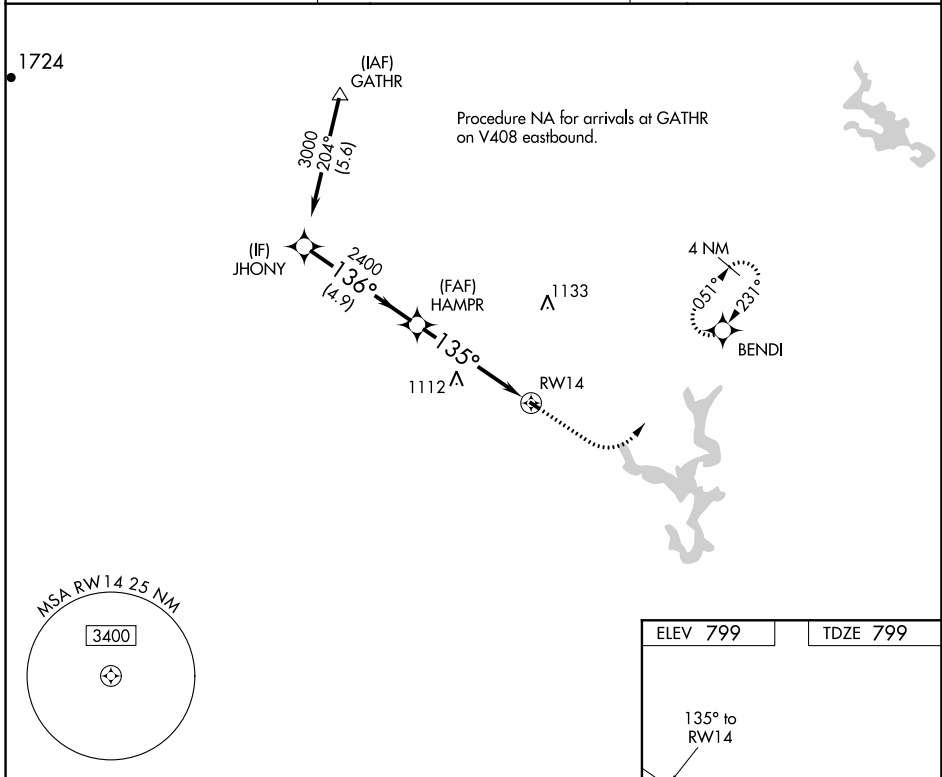


APP CRS <b>135°</b>	Rwy Idg TDZE Apt Elev	<b>1510</b> <b>799</b> <b>799</b>
------------------------	-----------------------------	---

# RNAV (GPS) RWY 14

CLEARVIEW AIRPARK (2W2)

RNP APCH.		MISSED APPROACH: Climb to 1500 then climbing left turn to 3000 direct BENDI and hold.
<p><b>▼</b> Procedure NA at night. Rwy 14 helicopter visibility reduction below 1 SM</p> <p><b>▲</b> NA. Use Carroll County Rgnl/Jack B. Poage Field altimeter setting, when not received, use Gaithersburg altimeter setting and increase all MDA 60 feet.</p>		
DMW AWOS-3 <b>121.25</b>	POTOMAC APP CON <b>125.525 291.625</b>	UNICOM <b>122.8 (CTAF) 0</b>



NE-3, 10 OCT 2019 to 07 NOV 2019

NE-3, 10 OCT 2019 to 07 NOV 2019

JHONY		Visual Segment - Obstacles.		1500	3000	BENDI
3000			HAMPR	↑	↶	✧
	136°					
		2400				
			135°			
						RWY 14
4.9 NM		5 NM				
CATEGORY	A	B	C	D		
LNAV MDA	1360-1 561 (600-1)		NA			
CIRCLING	1360-1 561 (600-1)		NA			

