

APP CRS	Rwy Idg	3280
134°	TDZE	1161
	Apt Elev	1174

RNAV (GPS) RWY 13

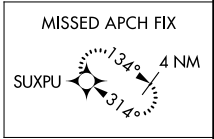
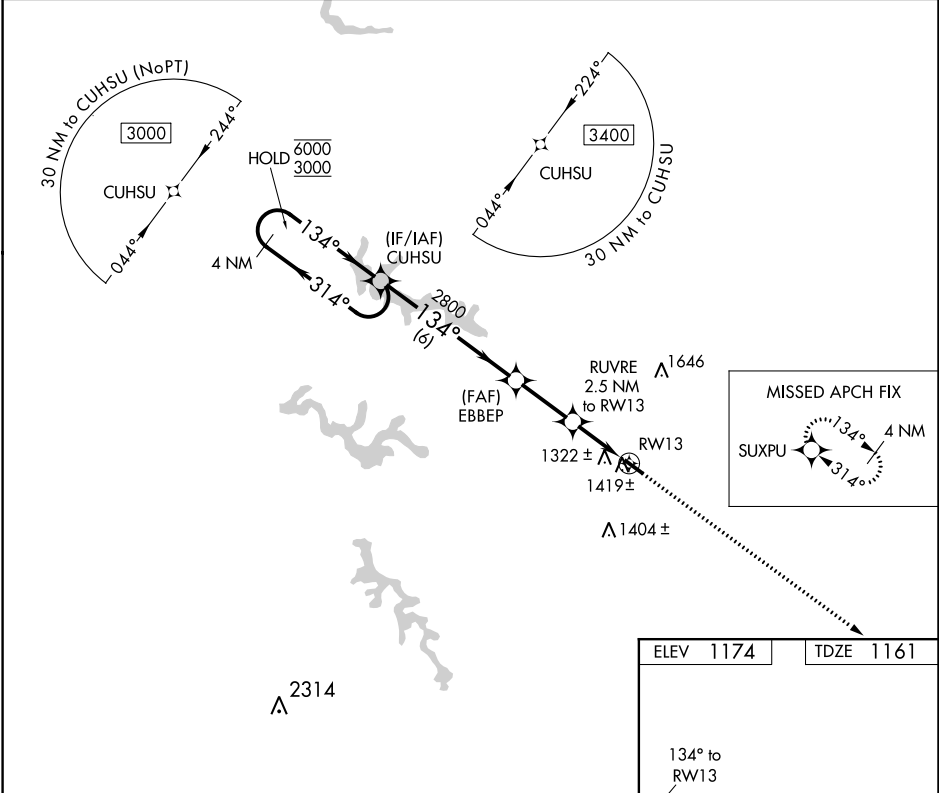
HARRISON COUNTY (8G6)

RNP APCH.

- Rwy 13 helicopter visibility reduction below 1 SM NA. Use Wheeling altimeter setting; when not received, use Washington altimeter setting and increase all MDA 40 feet. Procedure NA at night.
- NA

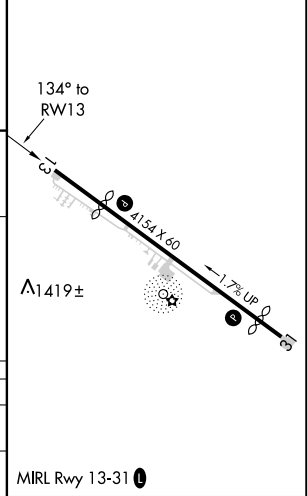
MISSED APPROACH: Climb to 3100 direct SUXPY and hold.

HLG ASOS 127.375	CLEVELAND CENTER 126.95 239.30	UNICOM 122.8 (CTAF) 0
----------------------------	--	---------------------------------



ELEV 1174	TDZE 1161
-----------	-----------

4 NM Holding Pattern		Visual Segment - Obstacles.		3100	SUXPY
				↑	✧
CATEGORY	A	B	C	D	
LNAV MDA	1720-1	559 (600-1)		NA	
CIRCLING	1780-1 606 (700-1)	1820-1 646 (700-1)		NA	



EC-2, 10 OCT 2019 to 07 NOV 2019

EC-2, 10 OCT 2019 to 07 NOV 2019