

APP CRS	Rwy Idg	3744
314°	TDZE	1163
	Apt Elev	1174

RNAV (GPS) RWY 31

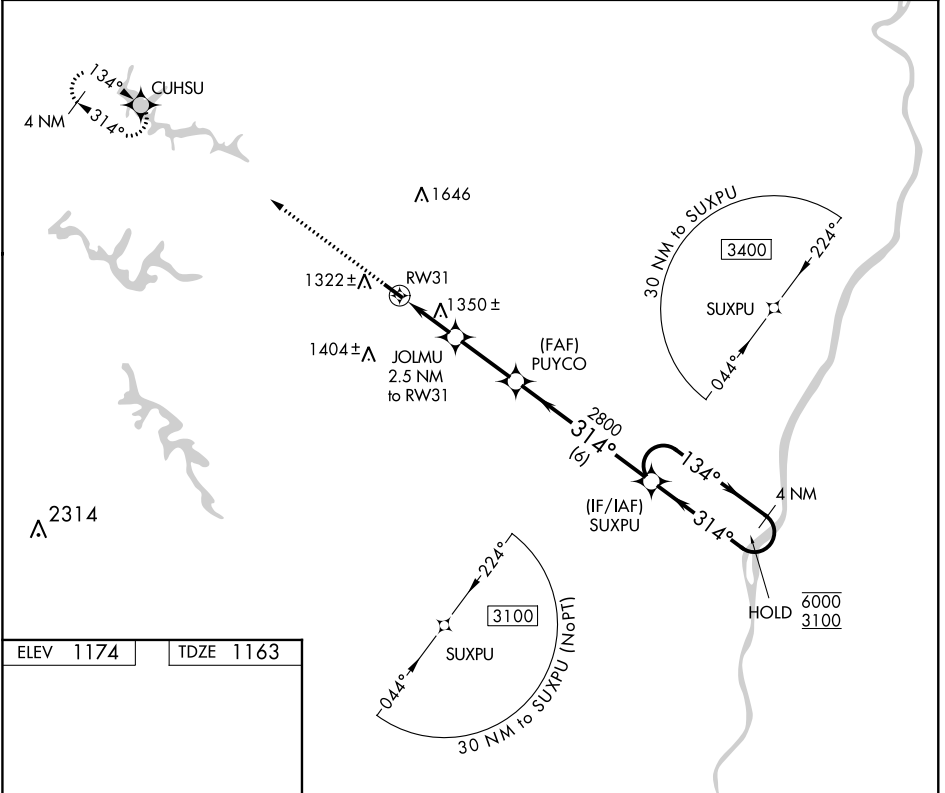
HARRISON COUNTY (8G6)

RNP APCH.

▼ Rwy 31 helicopter visibility reduction below 1 SM NA. Use Wheeling altimeter setting; when not received, use Washington altimeter setting and increase all MDA 40 feet. Procedure NA at night.

MISSED APPROACH:
Climb to 3000 direct CUHSU and hold.

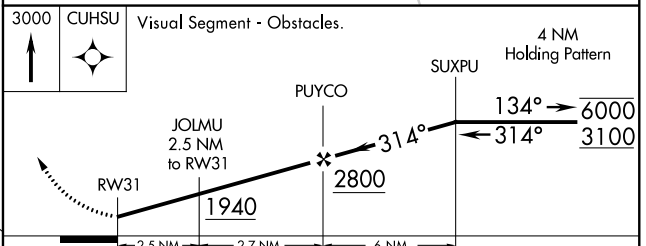
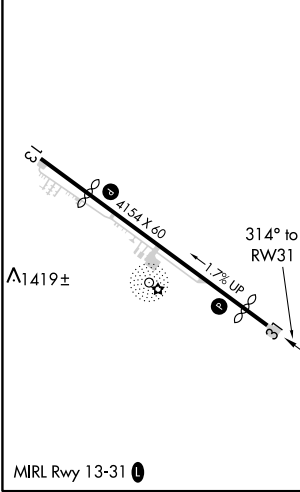
HLG ASOS 127.375	CLEVELAND CENTER 126.95 239.30	UNICOM 122.8 (CTAF) 0
----------------------------	--	---------------------------------



EC-2, 10 OCT 2019 to 07 NOV 2019

EC-2, 10 OCT 2019 to 07 NOV 2019

ELEV 1174	TDZE 1163
-----------	-----------



CATEGORY	A	B	C	D
LNNAV MDA	1660-1	497 (500-1)		NA
C CIRCLING	1780-1 606 (700-1)	1820-1 646 (700-1)		NA