

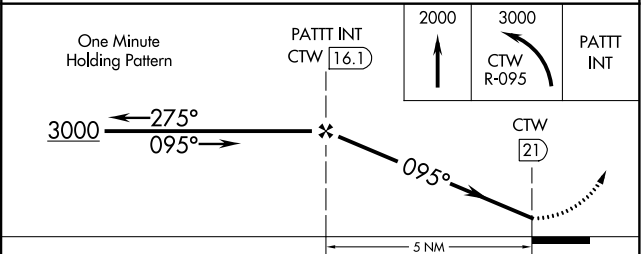
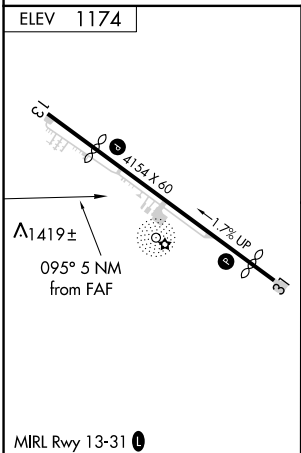
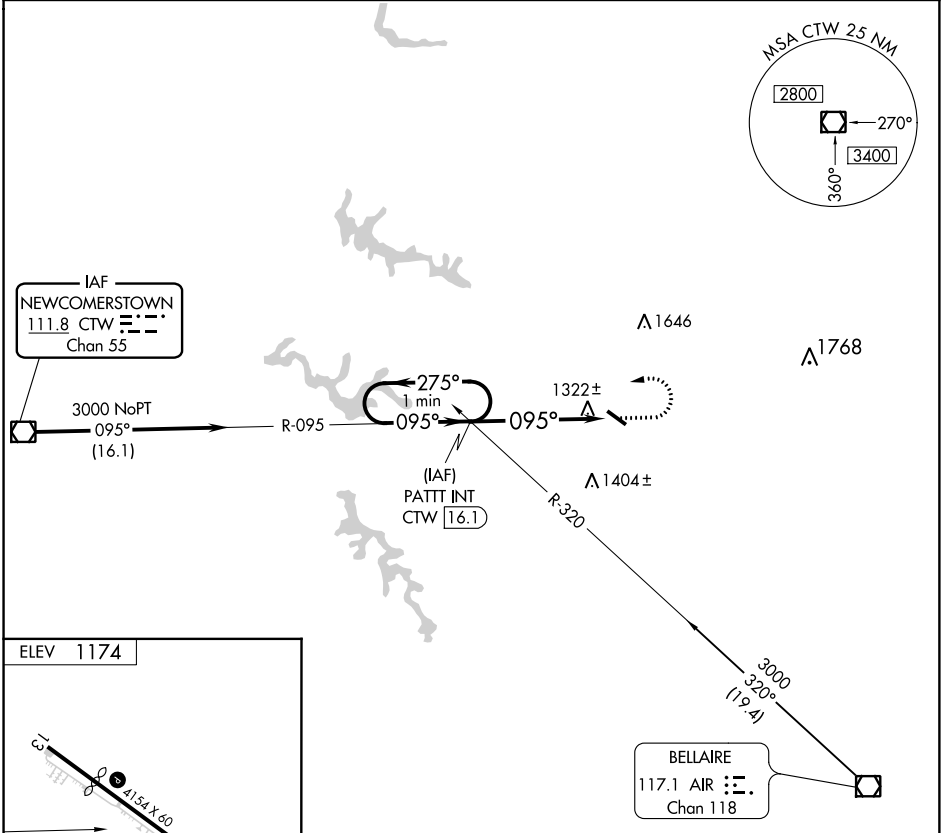
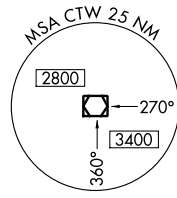
VOR/DME CTW <b>111.8</b> Chan 55	APP CRS <b>095°</b>	Rwy Idg TDZE Apt Elev	<b>N/A</b> <b>N/A</b> <b>1174</b>
--	------------------------	-----------------------------	---

**VOR-A**  
HARRISON COUNTY (8G6)

**NA** Use Wheeling, WV altimeter setting. Procedure NA at night.

MISSED APPROACH: Climb to 2000, then climbing left turn to 3000 on CTW VOR/DME R-095 to PATT INT/CTW 16.1 DME and hold.

HLG ASOS <b>127.375</b>	CLEVELAND CENTER <b>126.95 239.30</b>	UNICOM <b>122.8 (CTAF) 0</b>
----------------------------	--	---------------------------------



FAF to MAP 5 NM					
Knots	60	90	120	150	180
Min:Sec	5:00	3:20	2:30	2:00	1:40

CATEGORY	A	B	C	D
CIRCLING	1780-1 606 (700-1)	1820-1¼ 646 (700-1¼)	NA	

EC-2, 10 OCT 2019 to 07 NOV 2019

EC-2, 10 OCT 2019 to 07 NOV 2019