

WAAS CH <b>78015</b> <b>W12A</b>	APP CRS <b>117°</b>	Rwy Idg <b>4402</b> TDZE <b>319</b> Apt Elev <b>319</b>
--	------------------------	---

AL-6220 (FAA)

# RNAV (GPS) RWY 12

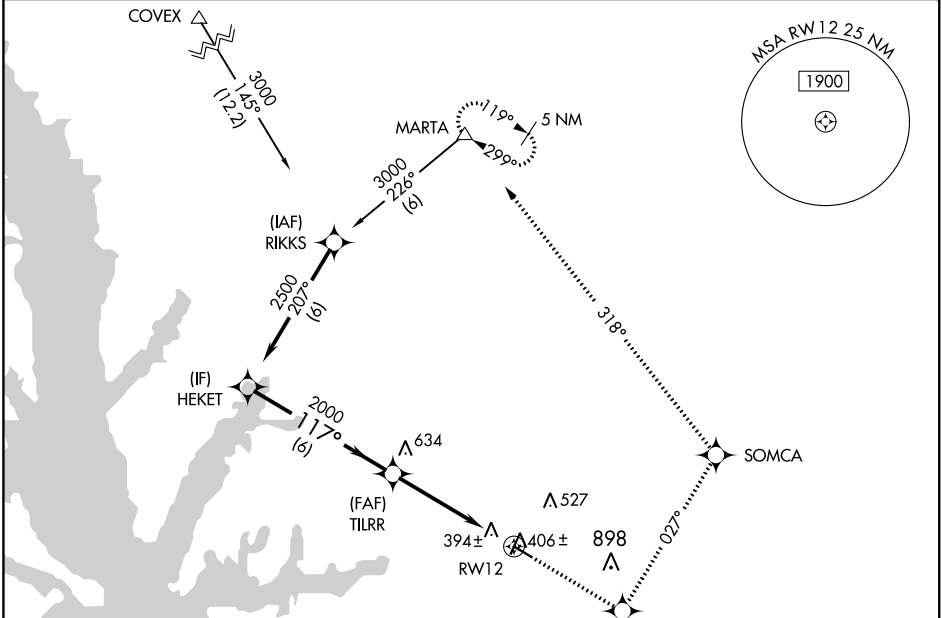
HART (3R4)

RNP APCH.  
 ▼ Baro-VNAV NA. Use Fort Polk altimeter setting; when not received, use Natchitoches altimeter setting and increase all DA 2 feet and all MDA 20 feet, increase LPV visibility all Cats ¼ mile, and increase Circling Cat C visibility ¼ mile.  
 ▲ NA

MISSED APPROACH: Climb to 4500 direct NOKSY and left turn via track 027° to SOMCA and left turn via track 318° to MARTA and hold.

POLK APP CON  
**123.7 261.3**

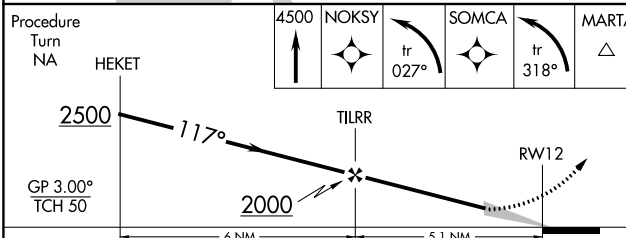
UNICOM  
**122.8 (CTAF) 0**



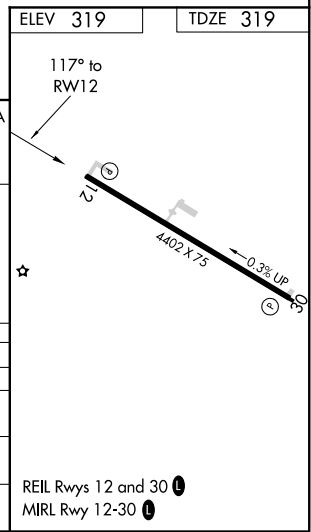
SC-4, 10 OCT 2019 to 07 NOV 2019

SC-4, 10 OCT 2019 to 07 NOV 2019

ELEV 319	TDZE 319
----------	----------



CATEGORY	A	B	C	D
LPV DA	713-1¼ 394 (400-1¼)			NA
LNAV/VNAV DA	765-1½ 446 (500-1½)			NA
LNAV MDA	820-1 501 (600-1)		820-1½ 501 (600-1½)	NA
CIRCLING	900-1 581 (600-1)		900-1½ 581 (600-1½)	NA



REIL Rwy 12 and 30 0  
MIRL Rwy 12-30 0