

# RNAV (GPS) RWY 30

HART (3R4)

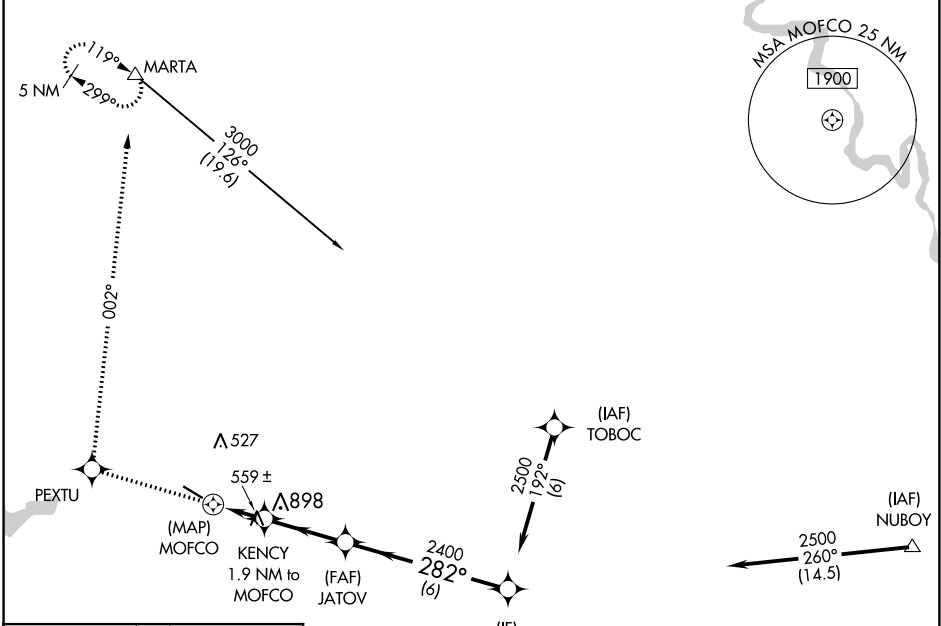
APP CRS <b>282°</b>	Rwy Idg <b>4402</b>
	TDZE <b>311</b>
	Apt Elev <b>319</b>

RNP APCH.  
 ▼ Rwy 30 helicopter visibility reduction below 3/4 SM NA.  
 ▲ NA Use Fort Polk altimeter setting; when not received, use Natchitoches altimeter setting and increase all MDA 20 feet.

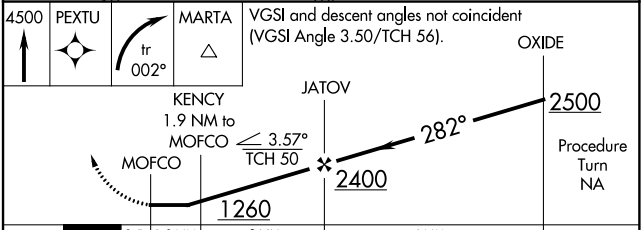
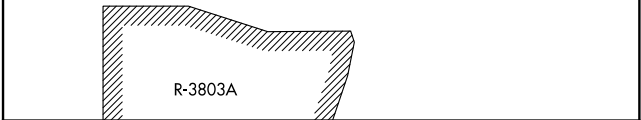
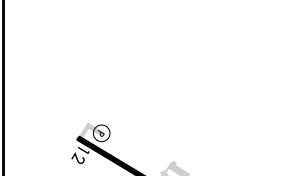
MISSED APPROACH: Climb to 4500 direct PEXTU and right turn via track 002° to MARTA and hold, continue climb in hold to 4500.

POLK APP CON  
**123.7 261.3**

UNICOM  
**122.8 (CTAF)**



ELEV 319	TDZE 311
----------	----------



REIL Rws 12 and 30			
MIRL Rwy 12-30			
CATEGORY	A	B	C
LNAV MDA	900-1	589 (600-1)	900-1 3/4 589 (600-1 3/4)
			D
			NA

SC-4, 10 OCT 2019 to 07 NOV 2019

SC-4, 10 OCT 2019 to 07 NOV 2019