

LURAY, VIRGINIA

AL-6229 (FAA)

19059

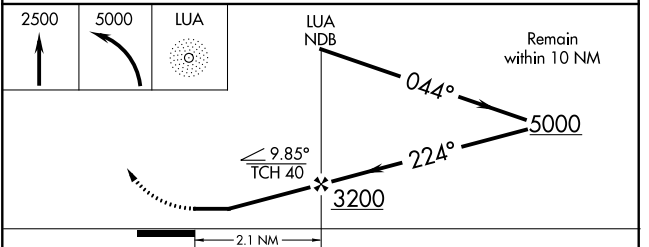
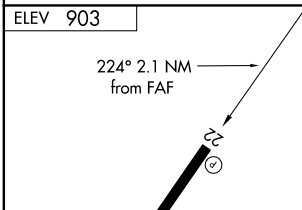
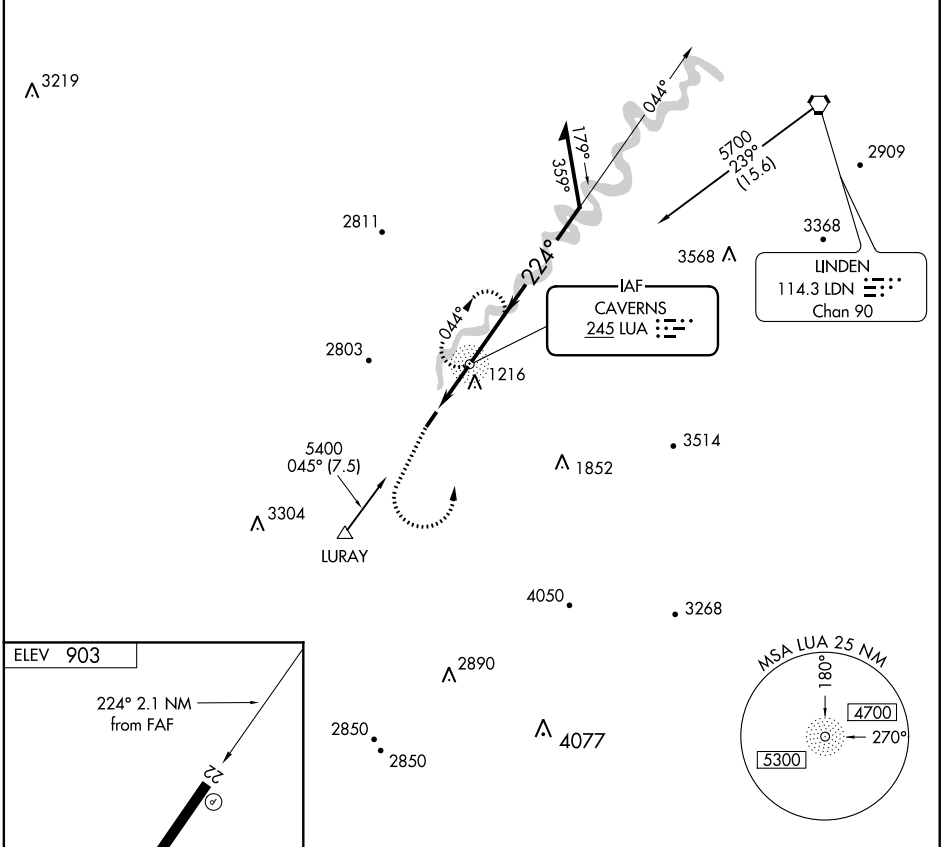
NDB LUA <b>245</b>	APP CRS <b>224°</b>	Rwy Idg TDZE Apt Elev	<b>N/A</b> <b>N/A</b> <b>903</b>
-----------------------	------------------------	-----------------------------	--

**NDB-A**  
LURAY CAVERNS (LUA)

**⚠** When local altimeter setting not received, use Staunton/Waynesboro/Harrisburg altimeter setting.

**⚠** MISSED APPROACH: Climb to 2500 then climbing left turn to 5000 direct LUA NDB and hold, continue climb-in-hold to 5000.

AWOS-3 <b>118.275</b>	WASHINGTON CENTER <b>133.2 282.2</b>	UNICOM <b>122.8 (CTAF) ①</b>
--------------------------	---	---------------------------------



REIL Rwy 4 and 22 ①  
HIRL Rwy 4-22 ①

FAF to MAP 2.1 NM					
Knots	60	90	120	150	180
Min:Sec	2:06	1:24	1:03	0:50	0:42

CATEGORY	A	B	C	D
CIRCLING	2360-1¼ 1457 (1500-1¼)	2360-1½ 1457 (1500-1½)	NA	NA

LURAY, VIRGINIA  
Amdt 7A 31MAY12

38°40'N-78°30'W

LURAY CAVERNS (LUA)  
**NDB-A**

NE-3, 10 OCT 2019 to 07 NOV 2019

NE-3, 10 OCT 2019 to 07 NOV 2019