

APP CRS <b>043°</b>	Rwy Idg <b>3799</b> TDZE <b>77</b> Apt Elev <b>79</b>
------------------------	---

# RNAV (GPS) RWY 4

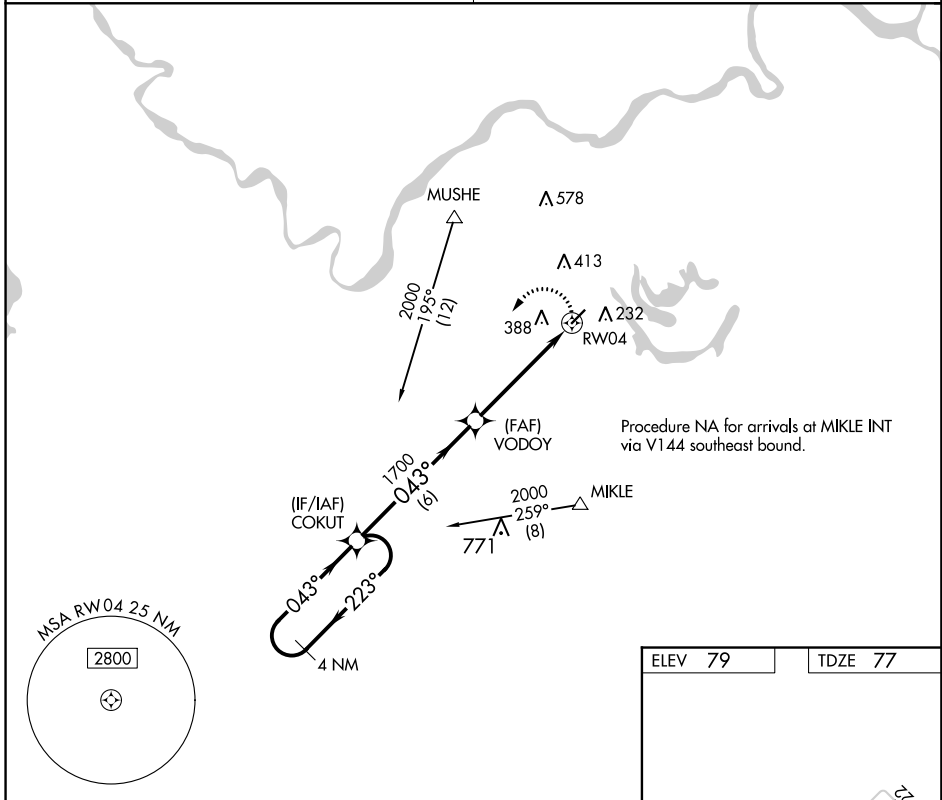
MARKSVILLE MUNI (MKV)

**NA** DME/DME RNP-0.3 NA. Use Ester Rgnl altimeter setting. If not received, use Alexandria Intl altimeter setting. When neither is received, procedure NA.

**MISSED APPROACH:** Climbing left turn to 2000 direct COKUT and hold.

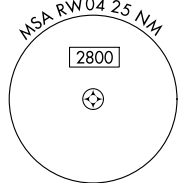
POLK APP CON  
**125.4 302.2**

CTAF  
**122.9**

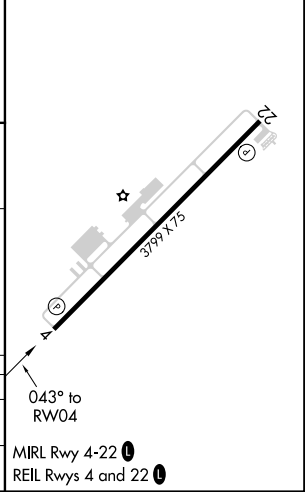
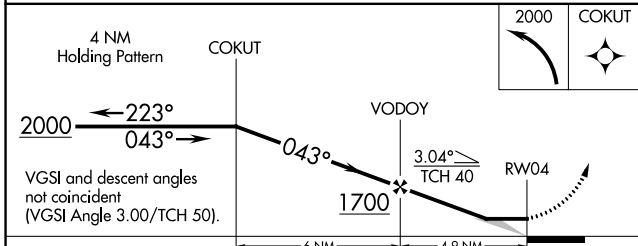


SC-4, 10 OCT 2019 to 07 NOV 2019

SC-4, 10 OCT 2019 to 07 NOV 2019



ELEV 79	TDZE 77
---------	---------



CATEGORY	A	B	C	D
LNVA MDA	680-1	603 (700-1)		NA
CIRCLING	760-1	681 (700-1)		NA