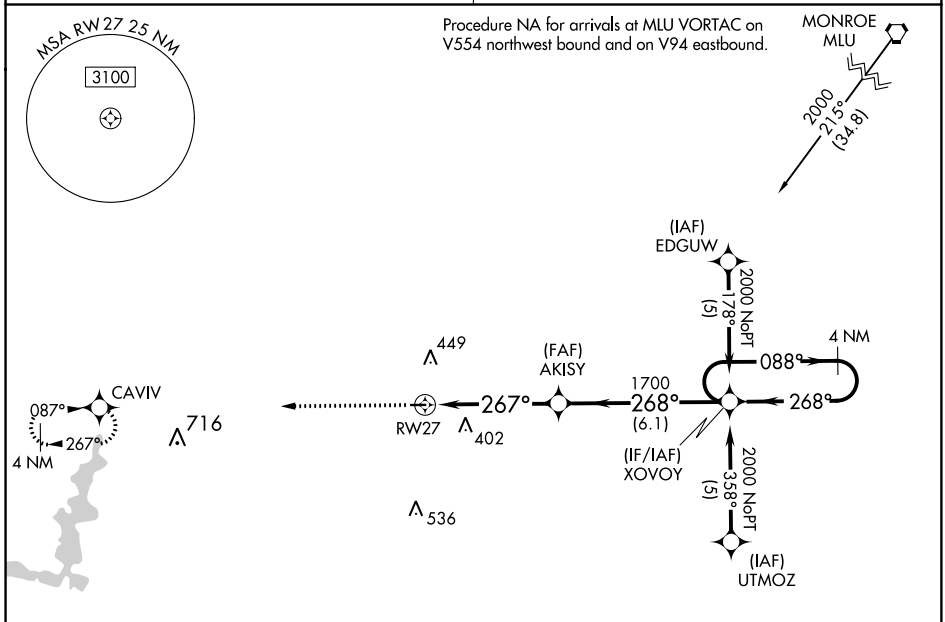


APP CRS <b>267°</b>	Rwy Idg <b>3002</b>
	TDZE <b>146</b>
	Apt Elev <b>146</b>

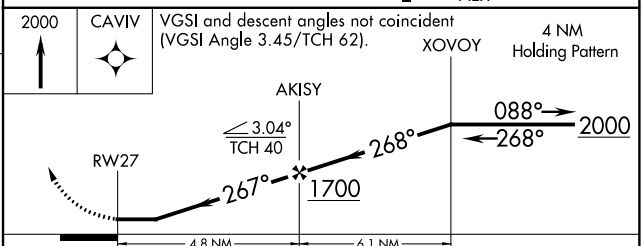
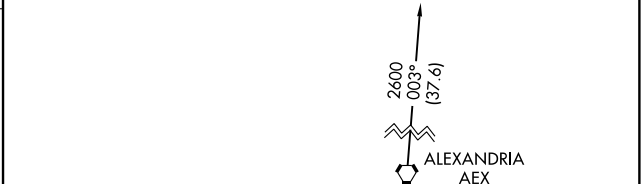
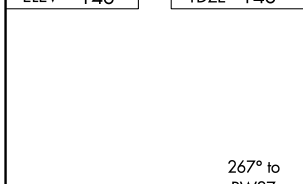
# RNAV (GPS) RWY 27

DAVID G JOYCE (ØR5)

RNP APCH.	MISSED APPROACH: Climb to 2000 direct CAVIV and hold.
<p>▼ Use Alexandria Intl altimeter setting, when not received use Esler Rgnl altimeter setting. Procedure NA at night. Helicopter visibility reduction below 1 SM NA.</p> <p>▲ NA</p>	
POLK APP CON <b>125.4 302.2</b>	UNICOM <b>122.7 (CTAF) 0</b>



ELEV 146	TDZE 146
----------	----------



MIRL Rwy 9-27 0				
REIL Rwy 9 and 27 0				
CATEGORY	A	B	C	D
LNAV MDA	740-1 594 (600-1)		NA	

SC-4, 10 OCT 2019 to 07 NOV 2019

SC-4, 10 OCT 2019 to 07 NOV 2019