

| | | |
|-------------|----------|-------------|
| APP CRS | Rwy Idg | 3002 |
| 087° | TDZE | 146 |
| | Apt Elev | 146 |

RNAV (GPS) RWY 9

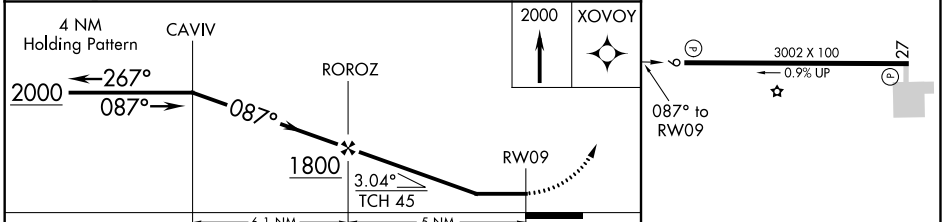
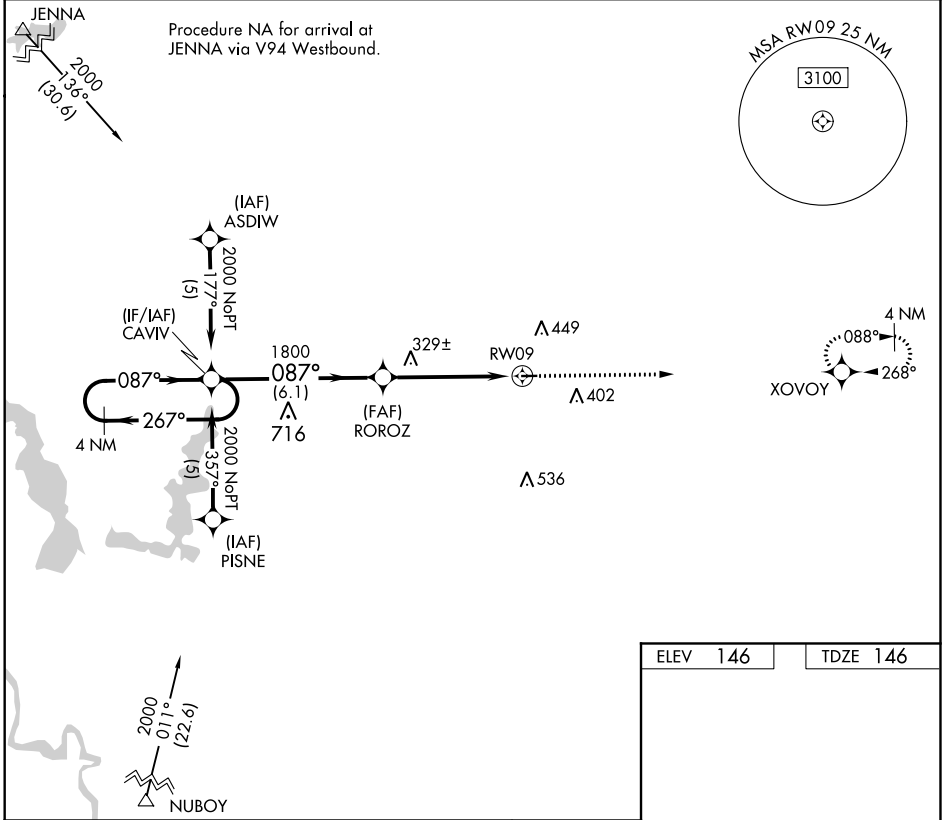
DAVID G JOYCE (ØR5)

▼ DME/DME RNP-0.3 NA. Use Alexandria Intl altimeter setting, when not received use Esler Rgnl altimeter setting. Procedure NA at night. Helicopter visibility reduction below 1 SM NA.

▲ NA MISSED APPROACH: Climb to 2000 direct XVOVOY and hold.

POLK APP CON
125.4 302.2

UNICOM
122.7 (CTAF) 0



| CATEGORY | A | B | C | D |
|----------|-------|-------------|---|----|
| LNAV MDA | 680-1 | 534 (600-1) | | NA |
| CIRCLING | 700-1 | 554 (600-1) | | NA |

| | |
|----------|----------|
| ELEV 146 | TDZE 146 |
|----------|----------|

MIRL Rwy 9-27 0
REIL Rws 9 and 27 0

SC-4, 10 OCT 2019 to 07 NOV 2019

SC-4, 10 OCT 2019 to 07 NOV 2019