

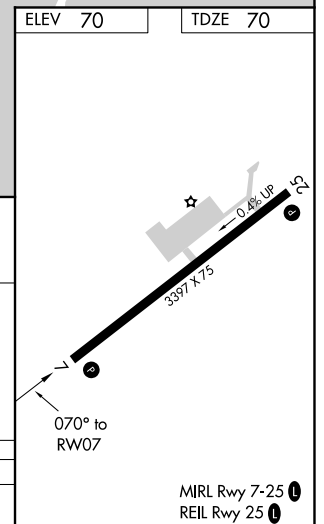
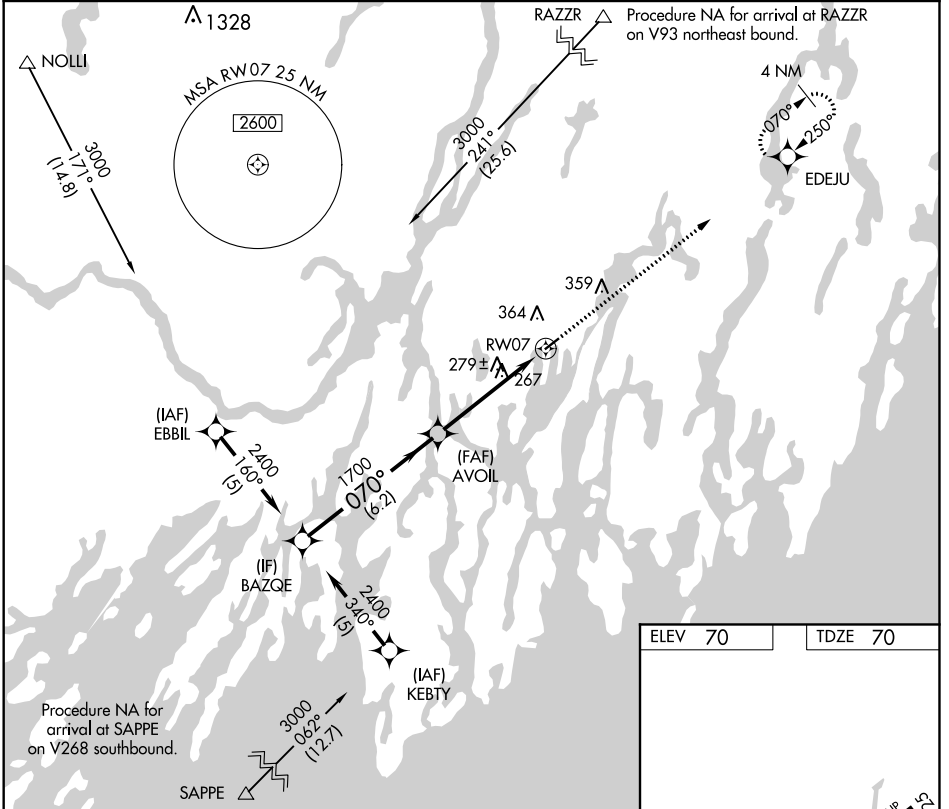
APP CRS	Rwy Idg	3397
070°	TDZE	70
	Apt Elev	70

RNAV (GPS) RWY 7

WISCASSET (IWI)

RNP APCH.	<p>Procedure NA at night. Rwy 7 helicopter visibility reduction below 1 SM NA. When local altimeter setting not received use Rockland altimeter setting and increase all MDA 80 feet.</p>	<p>MISSED APPROACH: Climb to 3000 direct EDEJU and hold.</p>
-----------	---	--

ASOS 135.725	PORTLAND APP CON ★ 119.75 269.35 (112°-292°) 120.4 299.2 (293°-111°)	UNICOM 122.8 (CTAF) 0
------------------------	--	--



Procedure Turn NA

VGSI and descent angles not coincident (VGSI Angle 4.00/TCH 40).

BAZQE	AVOIL	RW07
2400	1700	
070°	3.04° TCH 40	
6.2 NM	4.9 NM	

CATEGORY	A	B	C	D
LNAV MDA	560-1	490 (500-1)		NA

NE-1, 10 OCT 2019 to 07 NOV 2019

NE-1, 10 OCT 2019 to 07 NOV 2019