

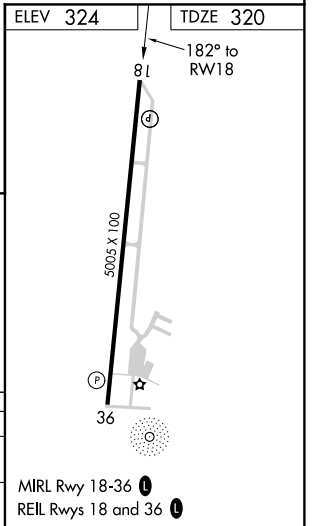
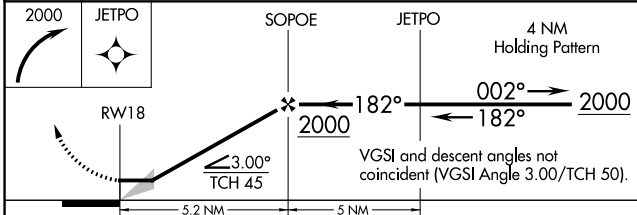
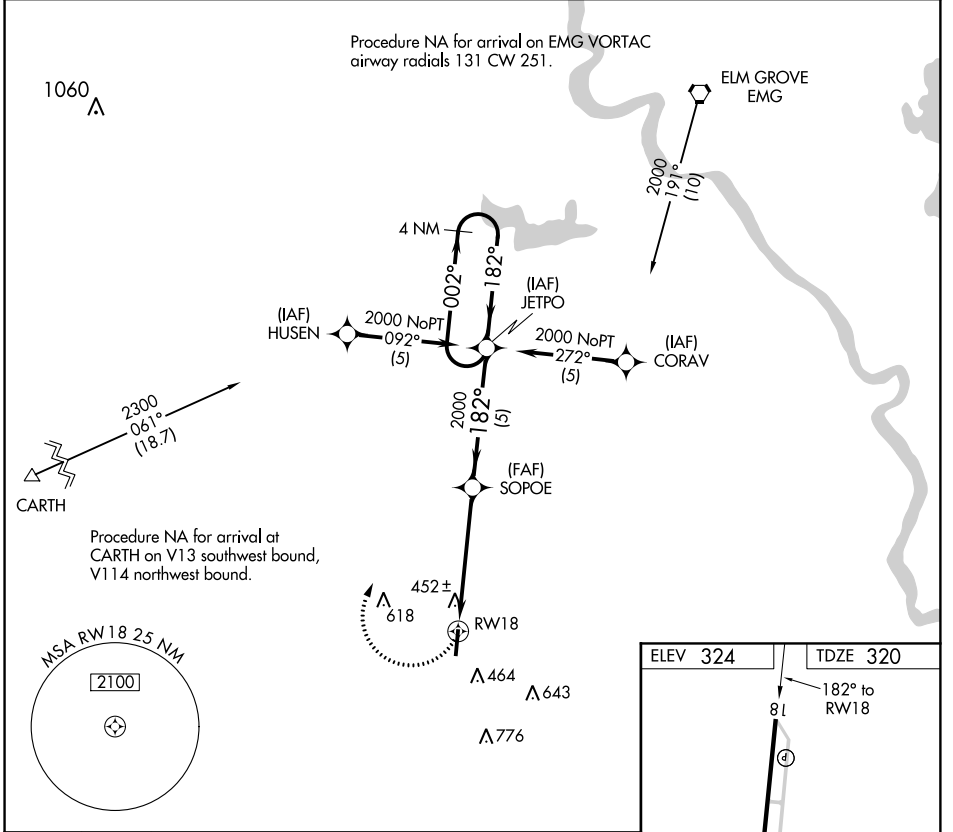
APP CRS <b>182°</b>	Rwy Idg TDZE Apt Elev	<b>5005</b> <b>320</b> <b>324</b>
------------------------	-----------------------------	---

# RNAV (GPS) RWY 18

C E 'RUSTY' WILLIAMS (3F3)

RNP APCH.	Use Shreveport Rgnl altimeter setting. Procedure NA at night. Rwy 18 helicopter visibility reduction below 1 SM NA.	MISSED APPROACH: Climbing right turn to 2000 direct JETPO WP and hold.
-----------	--	--

AWOS-3PT <b>119.125</b>	SHREVEPORT APP CON ★ <b>119.9 335.55</b>	UNICOM <b>122.8 (CTAF)</b>
----------------------------	---	-------------------------------



CATEGORY	A	B	C	D
RNAV MDA	780-1 460 (500-1)		780-1¼ 460 (500-1¼)	NA
CIRCLING	880-1 556 (600-1)		880-1½ 556 (600-1½)	NA

SC-4, 10 OCT 2019 to 07 NOV 2019

SC-4, 10 OCT 2019 to 07 NOV 2019