

WAAS CH 45816 W18A	APP CRS 184°	Rwy Ldg TDZE Apt Elev	4000 752 754
--	------------------------	-----------------------------	---

RNAV (GPS) RWY 18

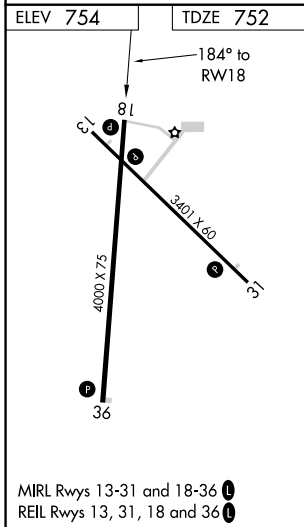
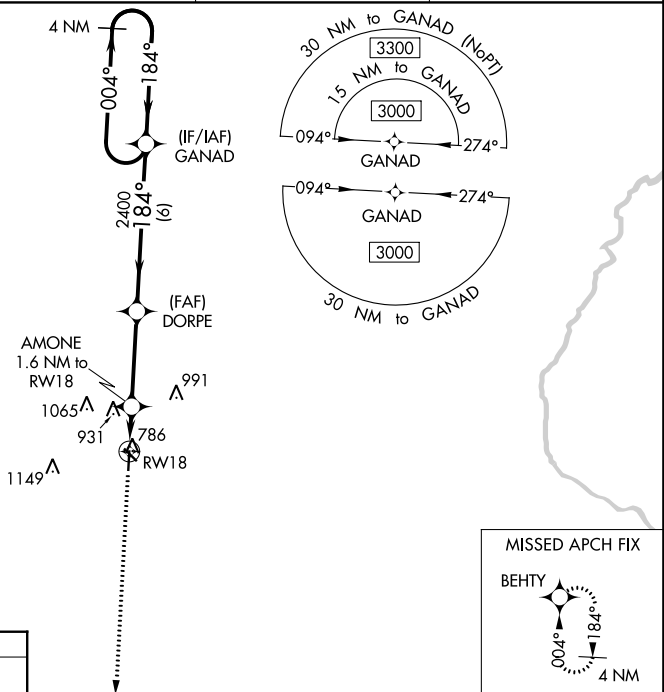
WASHINGTON MUNI (A WG)

RNP APCH.

▼ For uncompensated Baro-VNAV systems, LNAV/VNAV NA below -6°C (22°F) or above 54°C (130°F).
 ▲ Baro-VNAV NA when using Iowa City altimeter setting. When local altimeter setting not received, use Iowa City altimeter setting: increase LPV DA to 1064 feet, LNAV/VNAV DA to 1116 feet; increase all MDAs 80 feet and visibility LNAV and Circling Cat C ¼ SM.

MISSED APPROACH:
Climb to 3000 direct
BEHTY and hold.

AWOS-3 127.825	CHICAGO CENTER 135.6 370.95	GCO 121.725	UNICOM 122.7 (CTAF) 0
--------------------------	---------------------------------------	-----------------------	---------------------------------



3000 BEHTY VGSi and RNAV glidepath not coincident (VGSi Angle 3.00/TCH 20).

GANAD 4 NM Holding Pattern

004° → 3000
← 184°
184°
2400
2400
*1300
1.6 NM 3.4 NM 6 NM

GP 3.00° TCH 45																									
<table border="1"> <thead> <tr> <th>CATEGORY</th> <th>A</th> <th>B</th> <th>C</th> <th>D</th> </tr> </thead> <tbody> <tr> <td>LPV DA</td> <td></td> <td>1002-1 250 (300-1)</td> <td></td> <td>NA</td> </tr> <tr> <td>LNAV/VNAV DA</td> <td></td> <td>1054-1 302 (300-1)</td> <td></td> <td>NA</td> </tr> <tr> <td>LNAV MDA</td> <td>1160-1</td> <td>408 (500-1)</td> <td>1160-1½ 408 (500-1½)</td> <td>NA</td> </tr> <tr> <td>C CIRCLING</td> <td>1200-1 446 (500-1)</td> <td>1260-1 506 (600-1)</td> <td>1500-2¼ 746 (800-2¼)</td> <td>NA</td> </tr> </tbody> </table>	CATEGORY	A	B	C	D	LPV DA		1002-1 250 (300-1)		NA	LNAV/VNAV DA		1054-1 302 (300-1)		NA	LNAV MDA	1160-1	408 (500-1)	1160-1½ 408 (500-1½)	NA	C CIRCLING	1200-1 446 (500-1)	1260-1 506 (600-1)	1500-2¼ 746 (800-2¼)	NA
CATEGORY	A	B	C	D																					
LPV DA		1002-1 250 (300-1)		NA																					
LNAV/VNAV DA		1054-1 302 (300-1)		NA																					
LNAV MDA	1160-1	408 (500-1)	1160-1½ 408 (500-1½)	NA																					
C CIRCLING	1200-1 446 (500-1)	1260-1 506 (600-1)	1500-2¼ 746 (800-2¼)	NA																					

NC-3, 10 OCT 2019 to 07 NOV 2019

NC-3, 10 OCT 2019 to 07 NOV 2019