

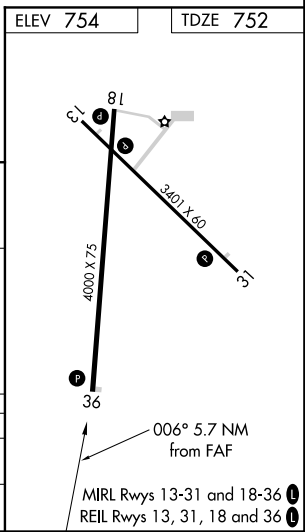
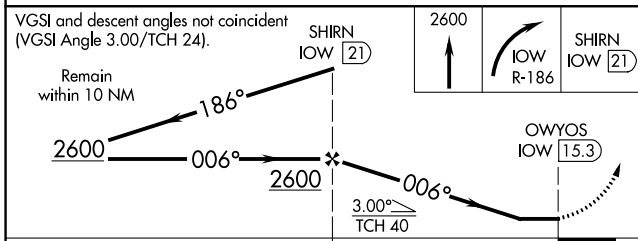
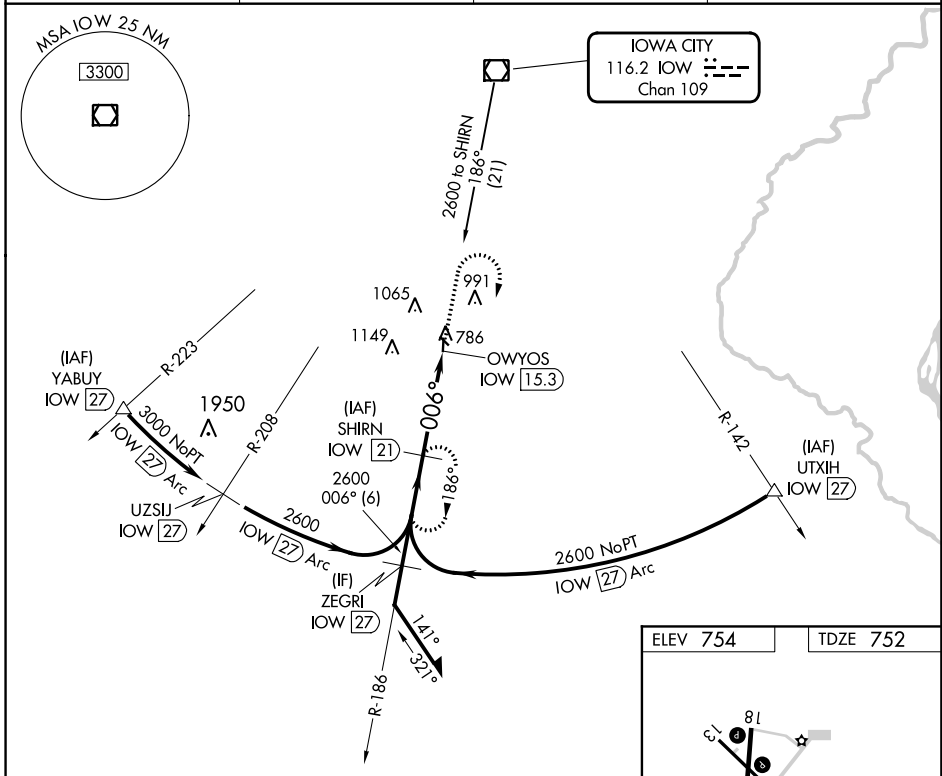
VOR/DME IOW 116.2 Chan 109	APP CRS 006°	Rwy Idg 4000 TDZE 752 Apt Elev 754
--	------------------------	---

VOR RWY 36

WASHINGTON MUNI (AWG)

DME Required.	<p>MISSED APPROACH: Climb to 2600 then right turn on IOW VOR/DME R-186 to SHRN/21 DME and hold.</p>
<p>⚠ When local altimeter setting not received, use Iowa City altimeter setting and increase all MDAs 80 feet and visibility S-36 Cat C and Circling Cat C ¼ SM.</p>	

AWOS-3 127.825	CHICAGO CENTER 135.6 370.95	GCO 121.725	UNICOM 122.7 (CTAF) 0
--------------------------	---------------------------------------	-----------------------	---------------------------------



CATEGORY	A	B	C	D
S-36	1240-1	488 (500-1)	1240-1 3/8 488 (500-1 3/8)	NA
C CIRCLING	1240-1 486 (500-1)	1260-1 506 (600-1)	1500-2 1/4 746 (800-2 1/4)	NA

NC-3, 10 OCT 2019 to 07 NOV 2019

NC-3, 10 OCT 2019 to 07 NOV 2019