

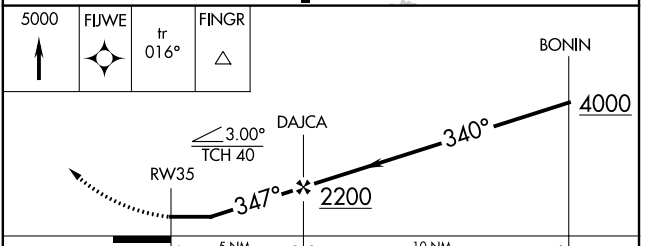
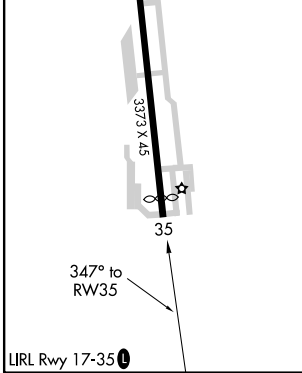
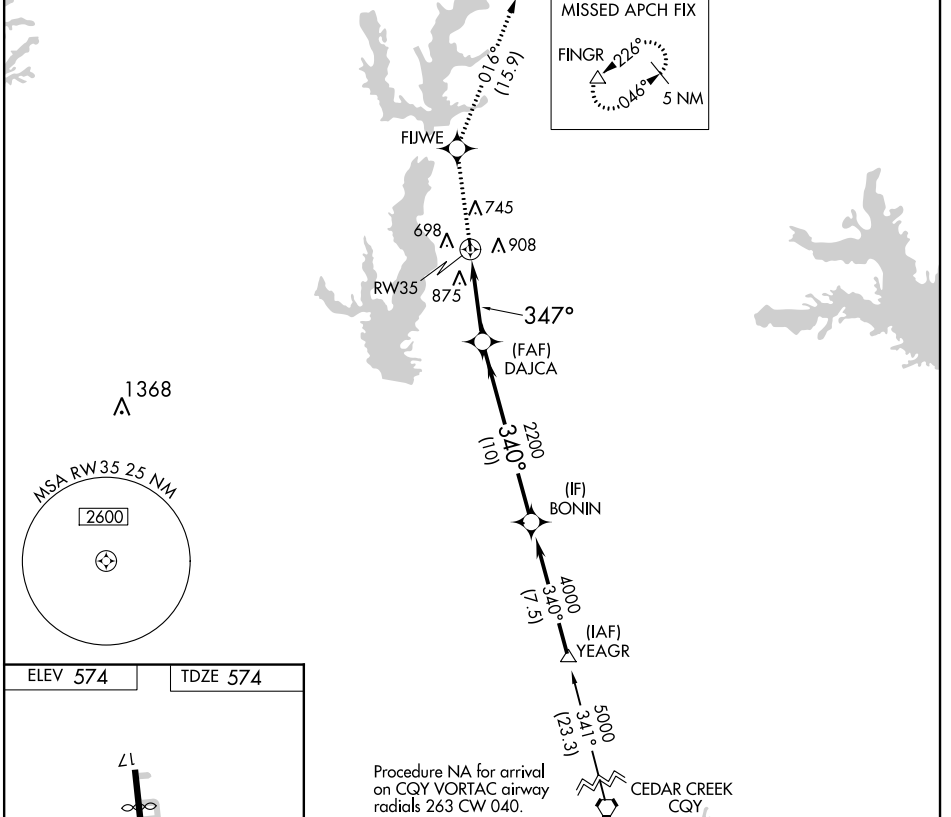
APP CRS 347°	Rwy Idg 3084
	TDZE 574
	Apt Elev 574

RNAV (GPS) RWY 35
RALPH M HALL/ROCKWALL MUNI (F46)

⚠ DME/DME RNP-0.3 NA. When local altimeter setting not received, use Dallas Love Field altimeter setting and increase all MDA 80 feet.
⚠ Helicopter visibility reduction below 1 SM NA. Procedure NA at night.

MISSED APPROACH: Climb to 5000 direct FIJWE and on track 016° to FINGR and hold.

AWOS-3 121.25	REGIONAL APP CON 124.3 282.275	UNICOM 122.8 (CTAF) 0
-------------------------	--	---------------------------------



CATEGORY	A	B	C	D
LNAV MDA	1200-1	626 (700-1)	NA	
CIRCLING	1280-1	706 (800-1)	NA	

SC-2, 10 OCT 2019 to 07 NOV 2019

SC-2, 10 OCT 2019 to 07 NOV 2019