

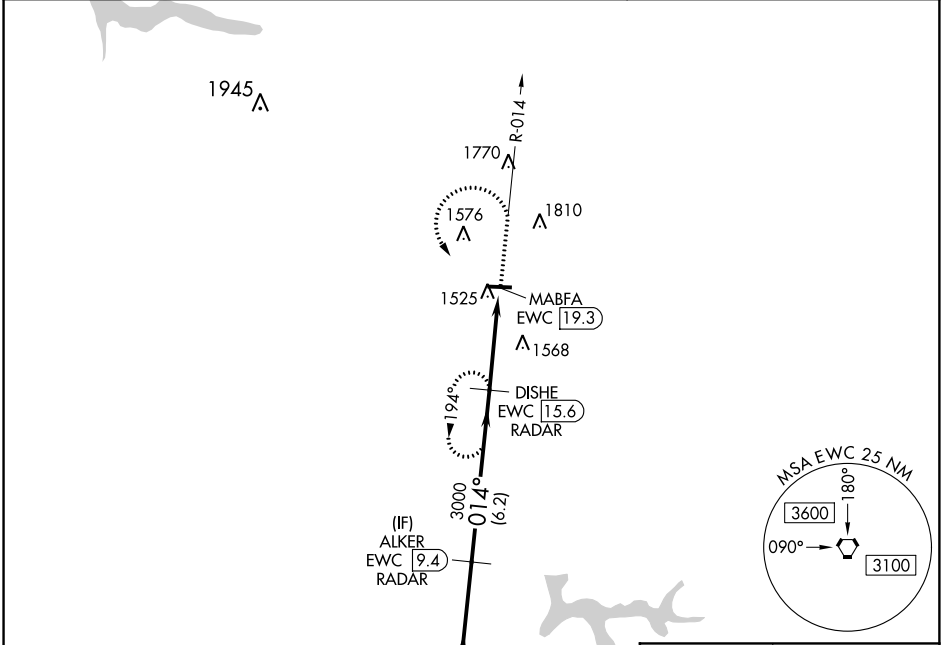
VORTAC EWC 115.8 Chan 105	APP CRS 014°	Rwy Idg TDZE Apt Elev	N/A N/A 1371
---	------------------------	-----------------------------	---

VOR/DME-A GROVE CITY (29D)

NA Use Franklin altimeter setting; when not received, use New Castle altimeter setting. Helicopter visibility reduction below 1 SM NA.

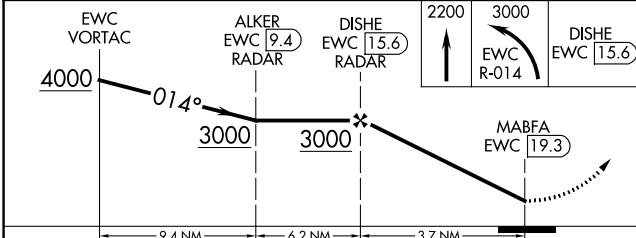
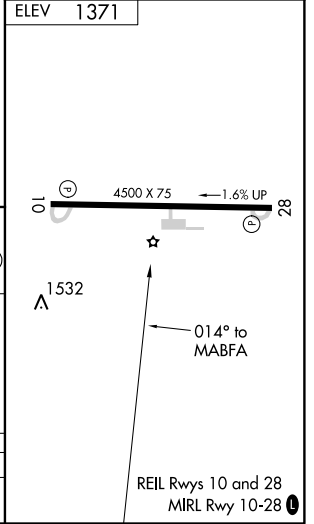
MISSED APPROACH: Climb to 2200 then climbing left turn to 3000 on EWC R-014 to DISHE/15.6 DME/RADAR and hold.

FKLAWOS 3-PT 118.175	YOUNGSTOWN APP CON ★ 133.95 322.3	UNICOM 122.725 (CTAF) 0
--------------------------------	---	--



Procedure NA for arrivals at EWC VORTAC on V37 southbound.

IAF
ELLWOOD CITY
115.8 EWC
Chan 105



CATEGORY	A	B	C	D
CIRCLING	1920-1	549 (600-1)	NA	

NE-4, 10 OCT 2019 to 07 NOV 2019

NE-4, 10 OCT 2019 to 07 NOV 2019