

| | | |
|---------------------------------|------------------------|---|
| WAAS CH 77699 W17A | APP CRS 176° | Rwy Idg 5006 TDZE 474 Apt Elev 474 |
|---------------------------------|------------------------|---|

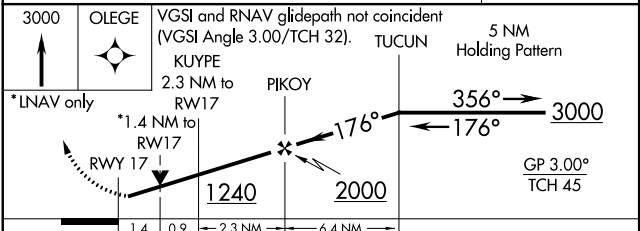
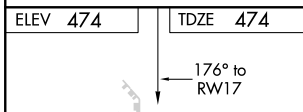
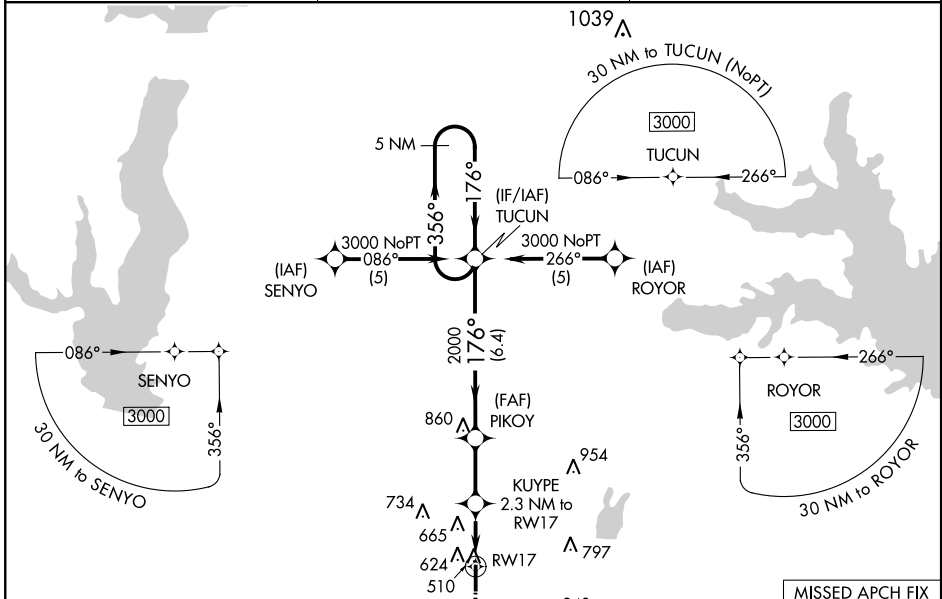
RNAV (GPS) RWY 17

TERRELL MUNI (TRL)

⚠ When local altimeter setting not received, use Dallas-Love Field altimeter setting and increase all DA 73 feet and all MDA 80 feet; increase LNAV/VNAV all Cnts visibility to 2½ mile, LNAV Cat C to 1½ mile and Circling Cat C to 1¼ mile. Baro-VNAV and VDP NA when using Dallas-Love Field altimeter setting. For uncompensated Baro-VNAV systems, LNAV/VNAV NA below -7°C (20°F) or above 54°C (130°F). DME/DME RNP-0.3 NA. Helicopter visibility reduction below ¾ SM NA.

MISSED APPROACH: Climb to 3000 direct OLEGE and hold.

| | | |
|------------------------|--|---------------------------------|
| ASOS 119.275 | FORT WORTH CENTER 132.025 360.75 | UNICOM 122.8 (CTAF) 0 |
|------------------------|--|---------------------------------|



| CATEGORY | A | B | C | D |
|--------------|----------------------|--------------------|----------------------|----|
| LPV DA | 756-1 282 (300-1) | | | NA |
| LNAV/VNAV DA | 1013-1½ 539 (600-1½) | | | NA |
| LNAV MDA | 960-1 486 (500-1) | | 960-1¾ 486 (500-1¾) | NA |
| CIRCLING | 1000-1 526 (600-1) | 1020-1 546 (600-1) | 1020-1½ 546 (600-1½) | NA |

RLS Rwy 17
REL Rws 17 and 35
MIRL Rws 17-35

SC-2, 10 OCT 2019 to 07 NOV 2019

SC-2, 10 OCT 2019 to 07 NOV 2019