

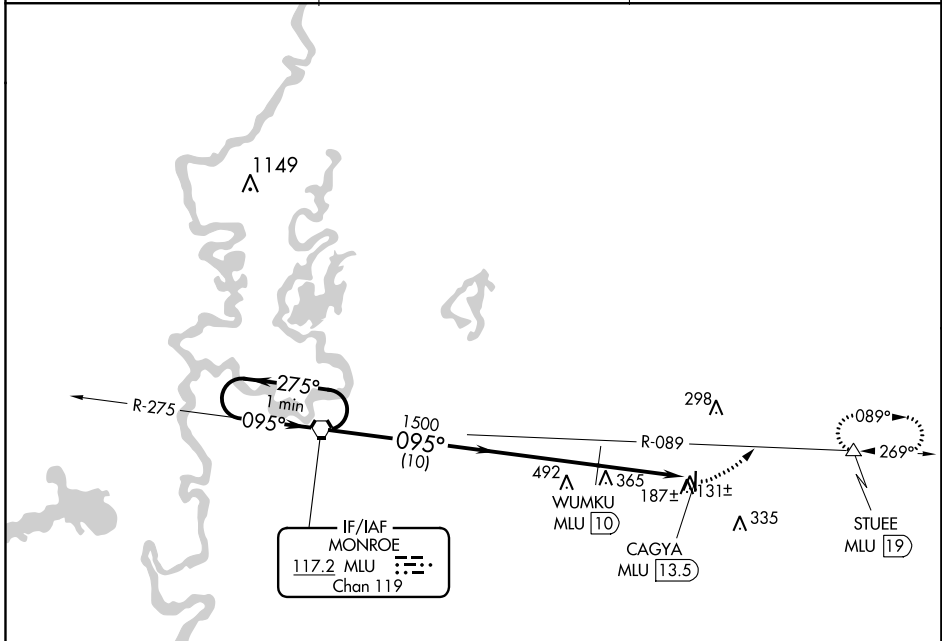
VORTAC MLU <b>117.2</b> Chan <b>119</b>	APP CRS <b>095°</b>	Rwy Idg TDZE Apt Elev	<b>N/A</b> <b>N/A</b> <b>83</b>
---	------------------------	-----------------------------	---------------------------------------

**VOR/DME-A**  
JOHN H HOOKS JR MEMORIAL (M79)

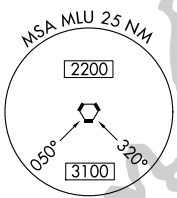
**NA** Circling to Rwy 18 NA at night. Helicopter visibility reduction below 1 SM NA. Use Monroe altimeter setting; when not received use Bastrop altimeter setting and increase all MDA 20 feet.

**MISSED APPROACH:** Climbing left turn to 3000 on MLU VORTAC R-089 to STUEE/MLU 19 DME and hold, continue climb-in-hold to 3000.

MLU ASOS <b>125.05</b>	MONROE APP CON ★ <b>126.9</b>	UNICOM <b>122.8</b> (CTAF) <b>0</b>
---------------------------	----------------------------------	--

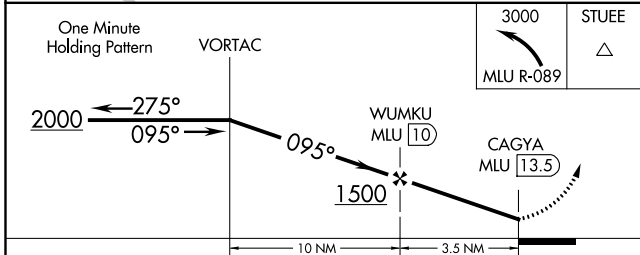
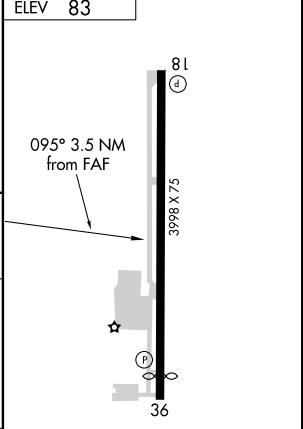


IF/IAF  
MONROE  
117.2 MLU  
Chan 119



NoPT for arrival on MLU VORTAC  
airway radials 157 CW 318.

ELEV 83



CATEGORY	A	B	C	D
<b>C</b> CIRCLING	600-1	517 (600-1)		NA

REIL Rwy 18 and 36 **0**  
MIRL Rwy 18-36 **0**

SC-4, 10 OCT 2019 to 07 NOV 2019

SC-4, 10 OCT 2019 to 07 NOV 2019