

WAAS CH <b>82505</b> <b>W25A</b>	APP CRS <b>248°</b>	Rwy Idg TDZE Apt Elev	<b>5000</b> <b>671</b> <b>673</b>
--	------------------------	-----------------------------	---

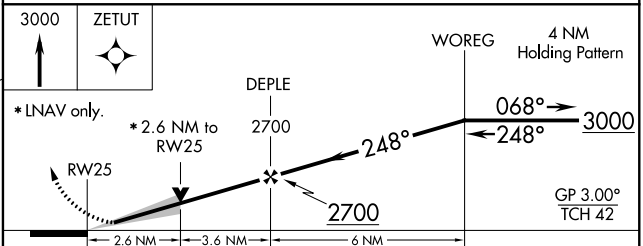
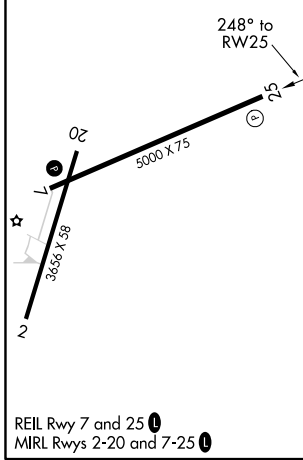
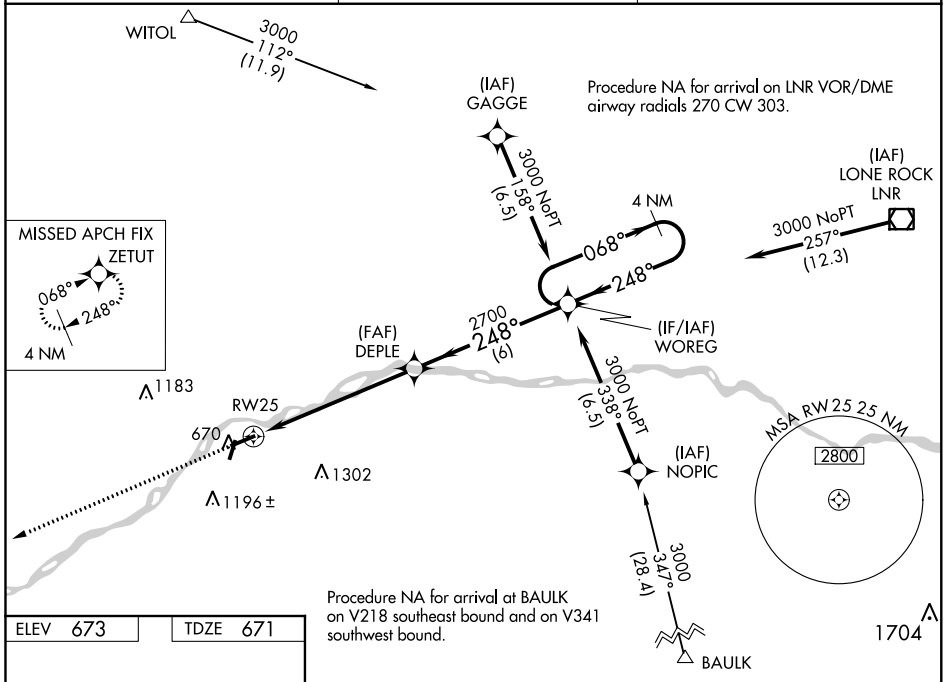
# RNAV (GPS) RWY 25

BOSCOBEL (OVS)

**▼** Baro-VNAV NA when using Lone Rock altimeter setting. For uncompensated Baro-VNAV systems, LNAV/VNAV NA below -21°C (-5°F) or above 54°C (130°F).  
**▲** DME/DME RNP-0.3 NA. VDP NA with Lone Rock altimeter setting. When local altimeter setting not received, use Lone Rock altimeter setting and increase all DA 57 feet and MDA 60 feet. Night landing: Rwy 2, 20 NA.  
**☔** -31°C

**MISSED APPROACH:**  
Climb to 3000 direct ZETUT and hold.

ASOS <b>126.775</b>	CHICAGO CENTER <b>133.3 380.35</b>	UNICOM <b>122.8 (CTAF)</b> <b>📞</b>
------------------------	---------------------------------------	--



CATEGORY	A	B	C	D
LPV DA	921-1 250 (300-1)			NA
LNAV/VNAV DA	1610-4 939 (1000-4)			NA
LNAV MDA	1560-1¼	889 (900-1¼)	1560-2½ 889 (900-2½)	NA
<b>📍</b> CIRCLING	1560-1¼	887 (900-1¼)	1740-3 1067 (1100-3)	NA

EC-3, 10 OCT 2019 to 07 NOV 2019

EC-3, 10 OCT 2019 to 07 NOV 2019