

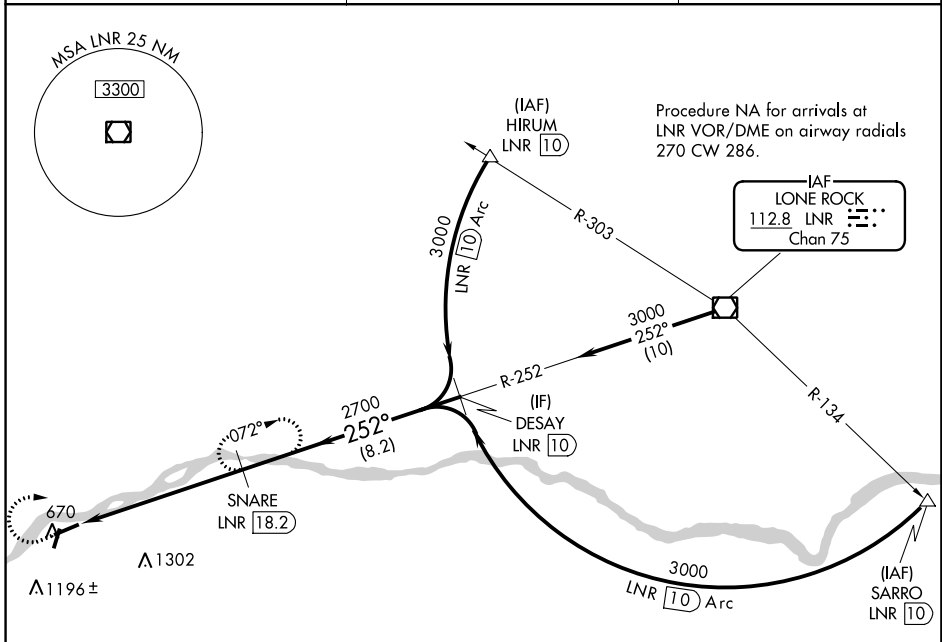
VOR/DME LNR <b>112.8</b> Chan <b>75</b>	APP CRS <b>252°</b>	Rwy Idg TDZE Apt Elev <b>5000</b> <b>671</b> <b>673</b>
---	------------------------	--

# VOR/DME RWY 25

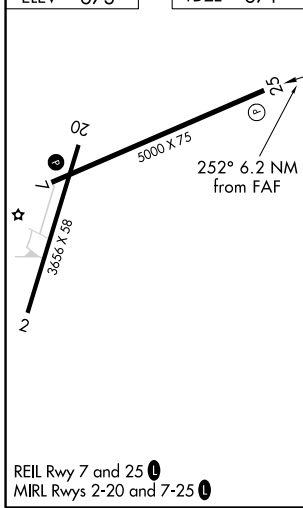
BOSCOBEL (OVS)

**⚠** If local altimeter setting not received, use Lone Rock altimeter setting and increase all MDAs 60 feet.  
**⚠** Visibility reduction by helicopters NA.  
**⚠** MISSED APPROACH: Climb to 2700 then right turn via LNR VOR/DME R-252 to SNARE/LNR 18.2 DME and hold.

ASOS <b>126.775</b>	CHICAGO CENTER <b>133.3 380.35</b>	UNICOM <b>122.8 (CTAF)</b> <b>⓪</b>
------------------------	---------------------------------------	--



ELEV 673	TDZE 671
----------	----------



2700	LNR R-252	SNARE LNR 18.2	DESAY LNR 10	Procedure Turn NA
2700	LNR 24.4	SNARE LNR 18.2	3000	
6.2 NM		8.2 NM		
CATEGORY	A	B	C	D
S-25	1620-1¼ 949 (1000-1¼)		1620-2¾ 949 (1000-2¾)	NA
CIRCLING	1620-1¼ 947 (1000-1¼)		1620-2¾ 947 (1000-2¾)	NA

EC-3, 10 OCT 2019 to 07 NOV 2019

EC-3, 10 OCT 2019 to 07 NOV 2019