

VOR/DME LNR 112.8 Chan 75	APP CRS 264°	Rwy Idg TDZE Apt Elev N/A N/A 742
---	------------------------	---

VOR or GPS-A

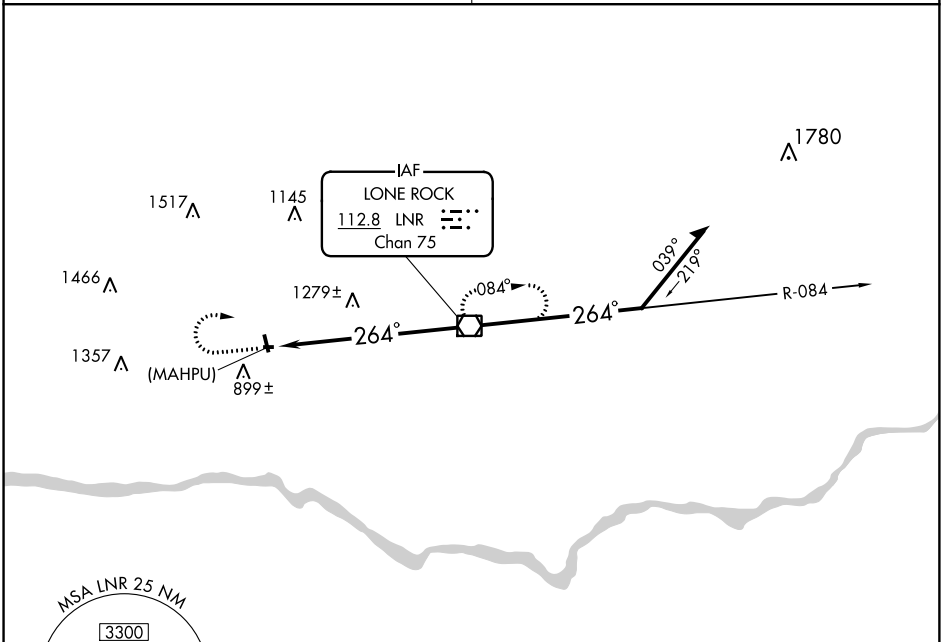
RICHLAND (93C)

NA Use Lone Rock altimeter setting; if not received, use Madison altimeter setting.

MISSED APPROACH: Climb to 3000 then right turn direct LNR VOR/DME and hold.

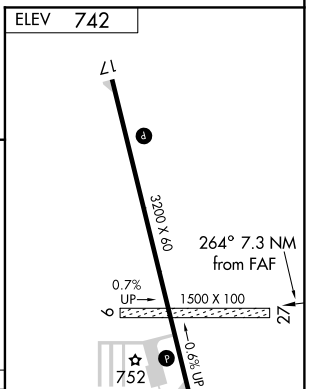
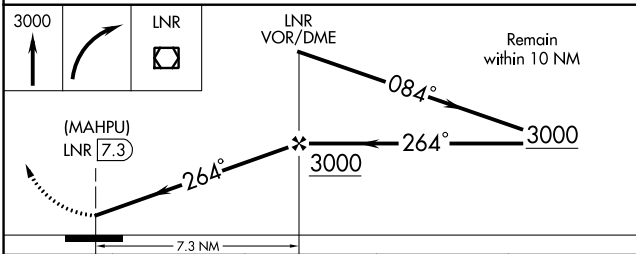
CHICAGO CENTER
133.3 380.35

CTAF
122.9



EC-3, 10 OCT 2019 to 07 NOV 2019

EC-3, 10 OCT 2019 to 07 NOV 2019



CATEGORY	A	B	C	D
CIRCLING	1620-1 878 (900-1)	1620-1¼ 878 (900-1¼)		NA
MADISON ALTIMETER SETTING MINIMUMS				
CIRCLING	1800-1¼ 1058 (1100-1¼)	1800-1½ 1058 (1100-1½)		NA

MRL Rwy 17-35	1				
REIL Rwy 17 and 35	1				
FAF to MAP 7.3 NM					
Knots	60	90	120	150	180
Min:Sec	7:18	4:52	3:39	2:55	2:26