

WAAS CH <b>90331</b> <b>W23A</b>	APP CRS <b>229°</b>	Rwy Idg TDZE <b>166</b> Apt Elev <b>166</b>	<b>5000</b> <b>166</b> <b>166</b>
--	------------------------	---	---

# RNAV (GPS) RWY 23

MOUNT OLIVE MUNI (W40)

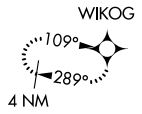
**⚠** DME/DME RNP-0.3 NA. Rwy 23 helicopter visibility reduction below 3/4 SM NA. Obtain Seymour-Johnson altimeter setting on CTAF; when not received, use Duplin Co altimeter setting and increase LPV DA to 461, and all MDA 20 feet, increase LNAV Cat C visibility 1/8 mile.

**MISSED APPROACH:** Climb to 700 then climbing right turn to 2000 direct WIKOG and hold.

SEYMOUR JOHNSON APP CON ★  
**119.7 273.6**

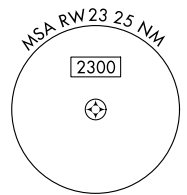
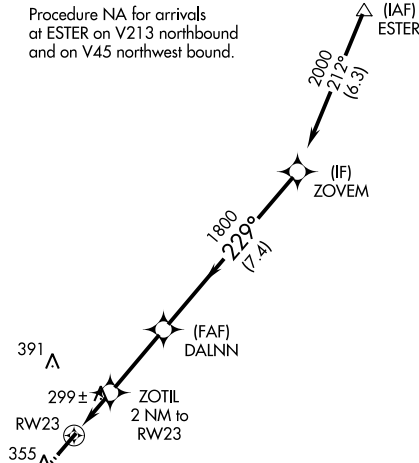
UNICOM  
**122.8 (CTAF) 0**

MISSED APCH FIX

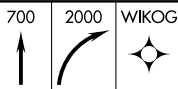
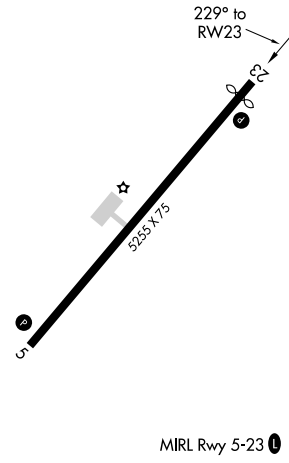


Procedure NA for arrivals at ESTER on V213 northbound and on V45 northwest bound.

1148  
▲

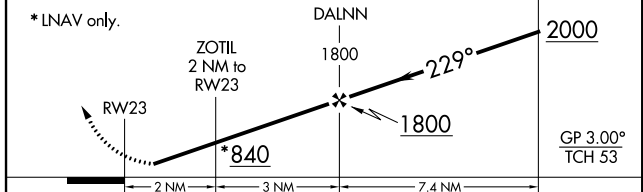


ELEV 166	TDZE 166
----------	----------



VGSI and RNAV glidepath not coincident (VGSI Angle 3.50/TCH 43).

\*LNAV only.



CATEGORY	A	B	C	D
LPV DA	452-1 286 (300-1)			NA
LNAV MDA	580-1	414 (500-1)	580-1 1/8 414 (500-1 1/8)	NA
CIRCLING	700-1	534 (600-1)	700-1 1/2 534 (600-1 1/2)	NA