

|  |                        |   |
|--|------------------------|---|
| WAAS<br>CH <b>69431</b><br><b>W05A</b> | APP CRS<br><b>049°</b> | Rwy Idg <b>5255</b><br>TDZE <b>166</b><br>Apt Elev <b>166</b> |
|--|------------------------|---|

# RNAV (GPS) RWY 5

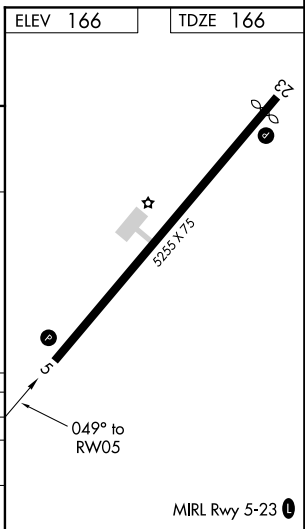
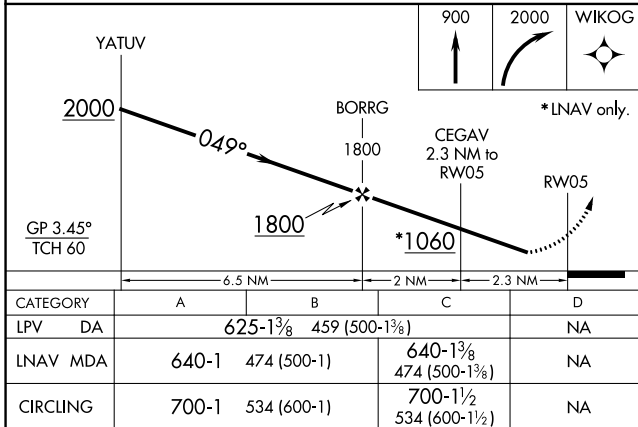
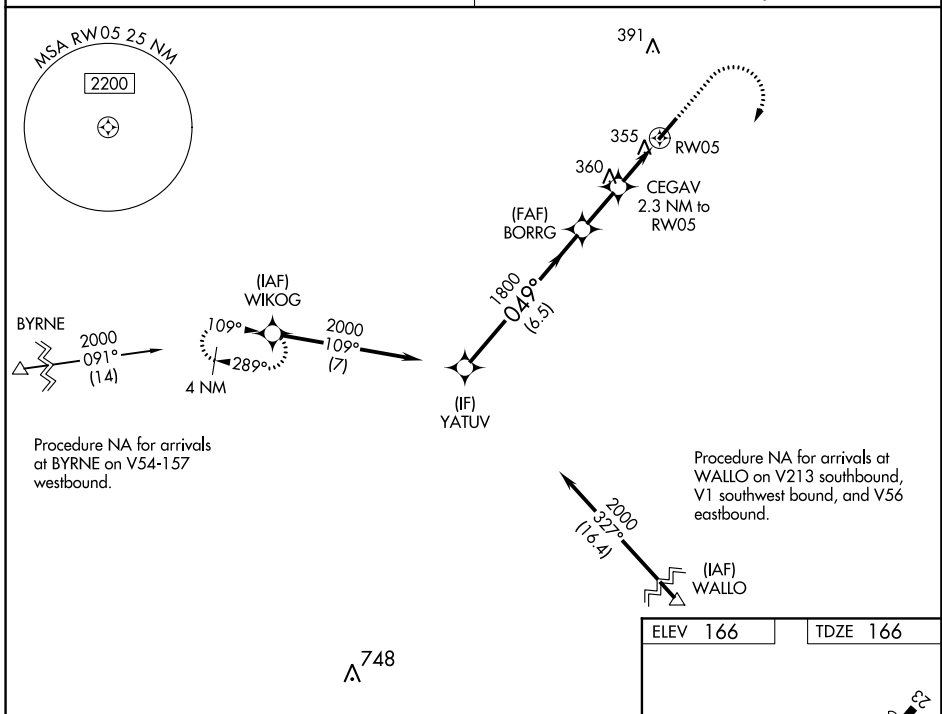
MOUNT OLIVE MUNI (W40)

**NA** DME/DME RNP-0.3 NA. Rwy 5 helicopter visibility reduction below 3/4 SM NA. Obtain Seymour-Johnson AFB altimeter setting on CTAF; when not received, use Duplin Co altimeter setting and increase LPV DA to 634 and all MDA 20 feet.

**MISSED APPROACH:** Climb to 900 then climbing right turn to 2000 direct WIKOG and hold.

SEYMOUR JOHNSON APP CON ★  
**119.7 273.6**

UNICOM  
**122.8 (CTAF)**



SE-2, 10 OCT 2019 to 07 NOV 2019

SE-2, 10 OCT 2019 to 07 NOV 2019