

VORTAC ISO 109.6 Chan 33	APP CRS 255°	Rwy Idg TDZE Apt Elev	N/A N/A 166
--	------------------------	-----------------------------	--

VOR-A

MOUNT OLIVE MUNI (W40)

▼ Obtain Seymour-Johnson AFB altimeter setting on CTAF; when not received use Duplin County altimeter setting. DME or RADAR required.
▲ NA Procedure NA at night.

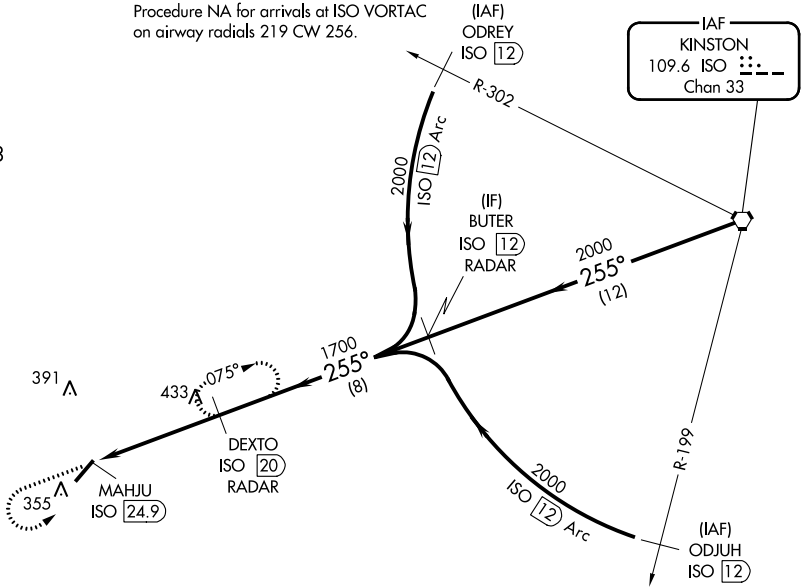
MISSED APPROACH: Climb to 1200 then climbing left turn to 1700 on ISO VORTAC R-255 to DEXTO/20 DME/RADAR and hold.

SEYMOUR JOHNSON APP CON ★
119.7 273.6

UNICOM
122.8 (CTAF) 0

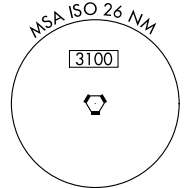
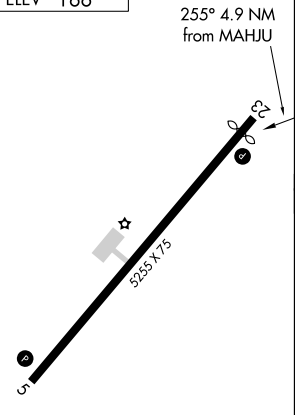
Procedure NA for arrivals at ISO VORTAC on airway radials 219 CW 256.

▲ 1148



ELEV 166

255° 4.9 NM from MAHJU



1200	1700	DEXTO ISO 20	ISO VORTAC	
↑	ISO R-255	BUTER ISO 12 RADAR		
	MAHJU ISO 24.9	DEXTO ISO 20 RADAR	3000	
	1700	2000	255°	
	4.9 NM	8 NM	12 NM	
CATEGORY	A	B	C	D
CIRCLING	720-1 554 (600-1)	720-1¼ 554 (600-1¼)	720-1½ 554 (600-1½)	NA

MIRL Rwy 5-23 0

SE-2, 10 OCT 2019 to 07 NOV 2019

SE-2, 10 OCT 2019 to 07 NOV 2019