

WAAS CH 62913 W36A	APP CRS 003°	Rwy Idg 5002 TDZE 117 Apt Elev 119
--	------------------------	---

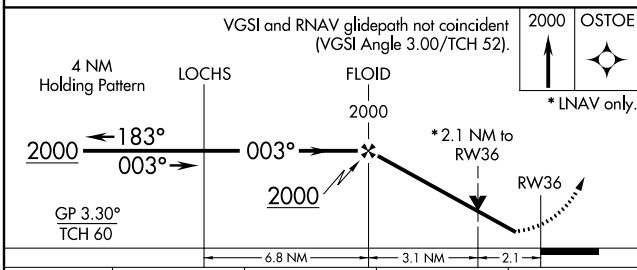
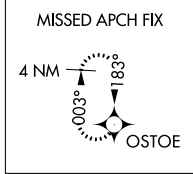
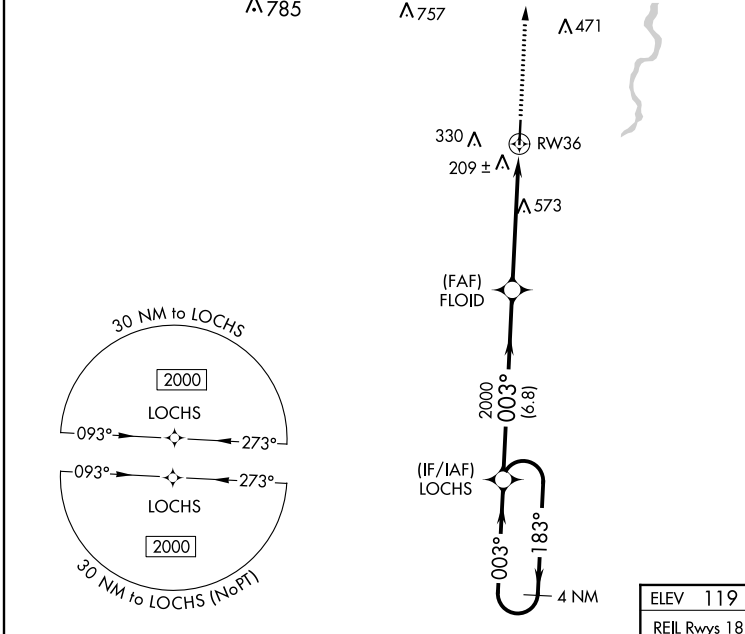
RNAV (GPS) RWY 36

GEORGE R CARR MEMORIAL AIR FIELD (B.X.A)

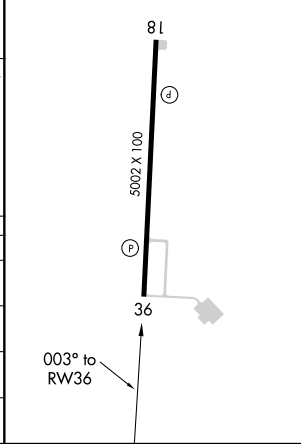
⚠ NA For uncompensated Baro-VNAV systems, LNAV/VNAV NA below -15°C (5°F) or above 54°C (130°F). DME/DME RNP-0.3 NA. Visibility reduction by helicopters NA. When local altimeter setting not received, use Lakefront altimeter setting; increase all DA 124 feet and all MDA 140 feet; increase LPV visibility all Cats 3/8 mile, increase LNAV/VNAV visibility all Cats 1/2 mile, increase LNAV visibility Cat B 1/4 mile and Cat C 1/2 mile, and increase Circling visibility Cats A and B 1/4 mile, and Cat C 1/2 mile. VDP and Baro-VNAV NA when using Lakefront altimeter setting.

MISSED APPROACH:
Climb to 2000 direct OSTOE and hold.

AWOS-3PT 118.025	HOUSTON CENTER 126.8 327.8	UNICOM 122.8 (CTAF) 📻
----------------------------	--------------------------------------	--



ELEV 119	TDZE 117
REIL Rwy 18 and 36 📻	MIRL Rwy 18-36 📻



CATEGORY	A	B	C	D
LPV DA	421-7/8	304 (300-7/8)		NA
LNAV/VNAV DA	512-1 1/8	395 (400-1 1/8)		NA
LNAV MDA	820-1 703 (800-1)		820-2 703 (800-2)	NA
CIRCLING	820-1 701 (800-1)		820-2 701 (800-2)	NA

SC-4, 10 OCT 2019 to 07 NOV 2019

SC-4, 10 OCT 2019 to 07 NOV 2019