

6102Z 10N Z 01 61400 2019 10 07 11-MS

**DEPARTURE ROUTE DESCRIPTION**

**TAKEOFF RUNWAY 25:** Begin a climbing left turn as soon as practicable but no later than DER heading 206° to 7100, then direct COPER, then on depicted route to cross APRES at or above 13100, thence. . . .

. . . on (assigned) transition, maintain 15000. Expect filed altitude 10 minutes after departure.

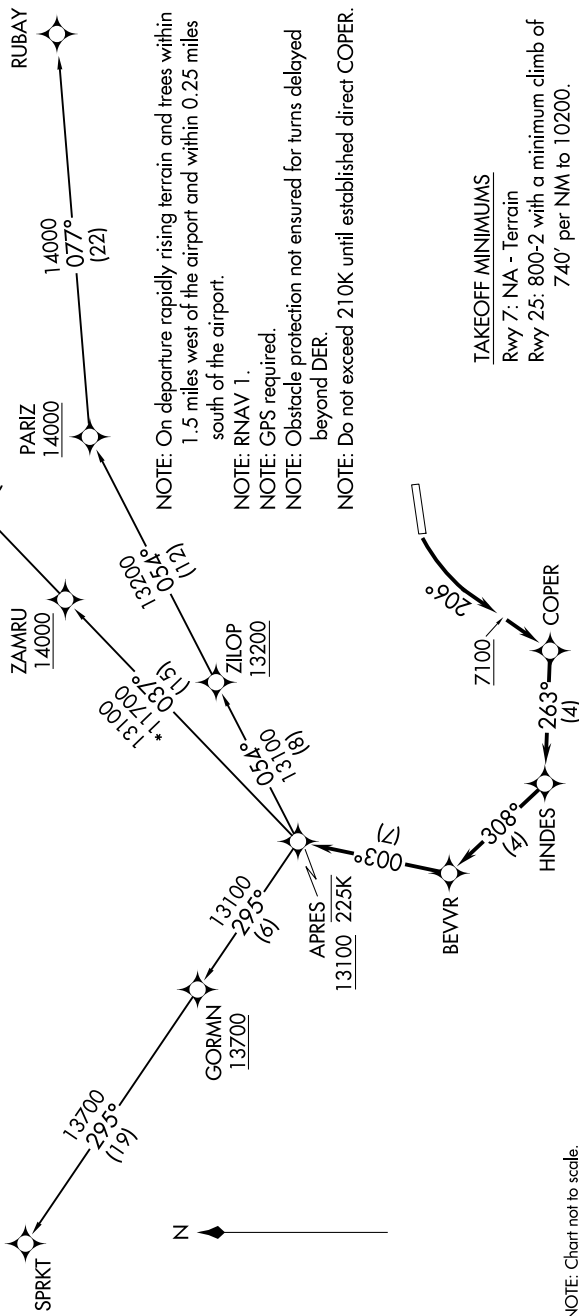
BELGN TRANSITION (BEVVR1.BELGN)

RUBAY TRANSITION (BEVVR1.RUBAY)

SPRKT TRANSITION (BEVVR1.SPRKT)

- ATIS 135.575
- CLINC DEL 124.75
- DENVER CLNC DEL 124.75
- (When tower closed)
- GND CON 121.8
- EAGLE TOWER \* 119.8
- DENVER CENTER 128.65 282.2

**TOP ALTITUDE:  
15000**



- NOTE: On departure rapidly rising terrain and trees within 1.5 miles west of the airport and within 0.25 miles south of the airport.
- NOTE: RNAV 1.
- NOTE: GPS required.
- NOTE: Obstacle protection not ensured for turns delayed beyond DER.
- NOTE: Do not exceed 210K until established direct COPER.

**TAKEOFF MINIMUMS**

- Rwy 7: NA - Terrain
- Rwy 25: 800-2 with a minimum climb of 740' per NM to 10200.

NOTE: Chart not to scale.

SW-1, 10 OCT 2019 to 07 NOV 2019